



TOPEX/Poseidon MGRD Quality Assessment Report

Cycle 429

07-05-2004 16-05-2004

Prepared by :	C. Schgounn, CLS G. Pontonnier, CLS M. Ablain, CLS	
Accepted by :	J. Dorandeu, CLS	
Quality visa :	M. Destouesse, CLS	
Approved by :	N. Picot, CNES	



SALP-RP-P2-EX-21120-CLS429

Edition 01.0, July 2004

1 Introduction. Document overview

The purpose of this document is to report the major features of the data quality from the Topex/Poseidon mission. The document is associated with data dissemination on a cycle by cycle basis.

The objectives of this document are :

- To provide a data quality assessment
- To provide users with necessary information for data processing
- To report any change likely to impact data quality at any level, from instrument status to software configuration
- To present the major useful results for the current cycle

It is divided into the following topics:

[Cycle overview](#)

[CALVAL main results](#)

2 Cycle overview

2.1 Cycle quality and performances

Data quality for this cycle appears to be nominal. For this cycle, the crossover standard deviation is 6.98 cm rms, and the standard deviation of Sea Level Anomalies (SLA) relative to a Mean Sea Surface is 9.53 cm.

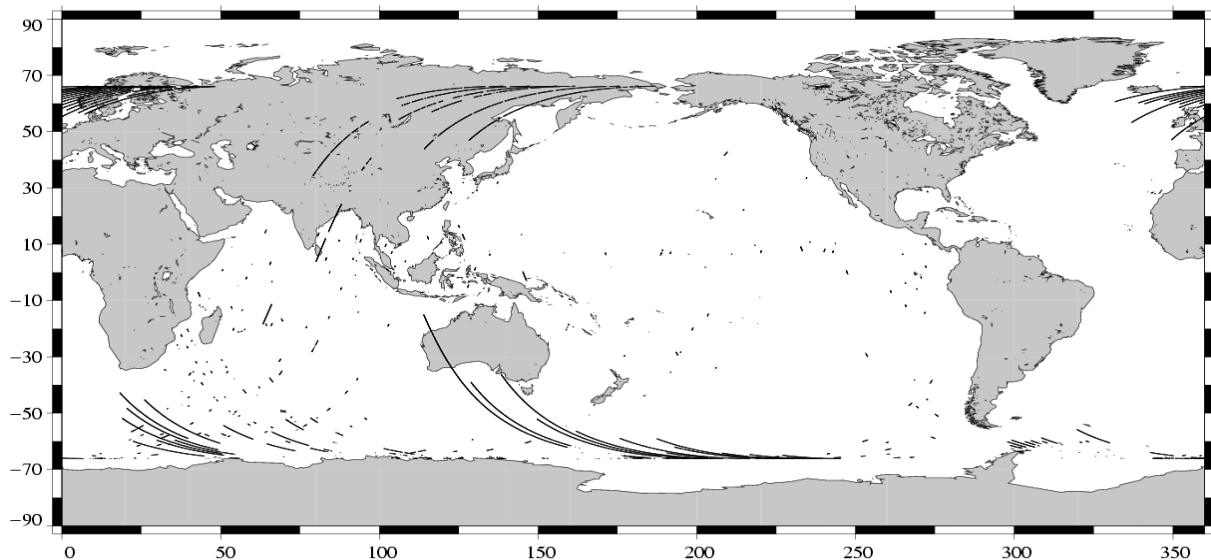
2.2 Warnings and recommendations

- Missing measurements :
 - There is a lot of data gaps due to tape recorder anomalies, especially in the Indian Ocean, in the South Pacific Ocean close to the South and Central America coasts and below the Groenland coasts.
- Measurements edited by the TMR parameters :

The following anomalies are explained by the problems in the interpolation of the TMR parameters due to tape recorder failures :

 - 3.08% of the measurements are removed by the TMR correction criterion (see the following figure).
 - Some measurements have radiometer earth flag set to valid over earth. A new criterion has been added to the editing procedure to remove all these measurements (see [Editing](#)) .

Edited parameter : Radiometer wet tropospheric correction
T/P Cycle 429 (07/05/2004 / 16/05/2004)



3 CALVAL main results

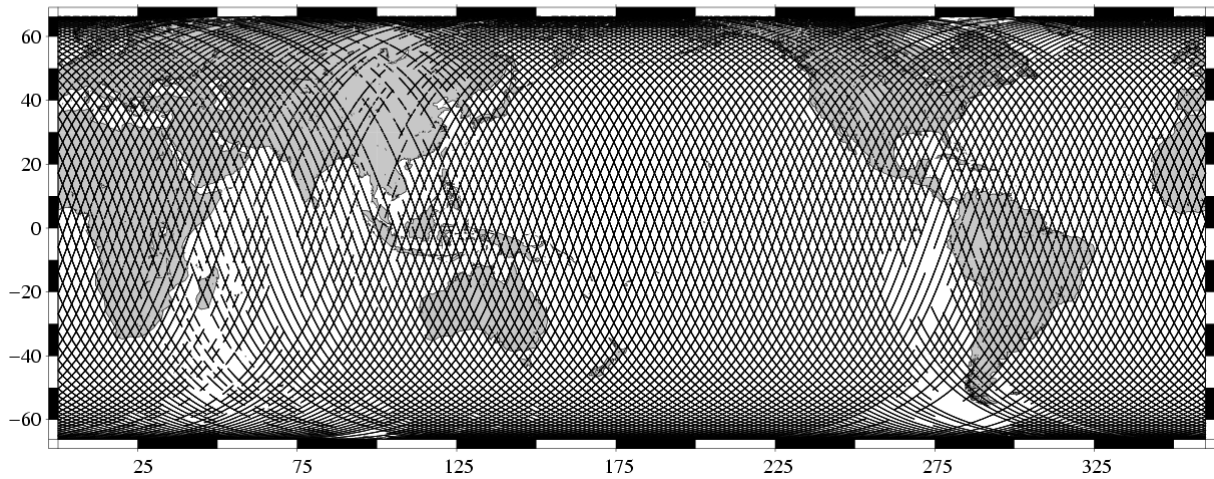
This section presents results that illustrate data quality during this cycle. These verification products are produced operationally so that they allow systematic monitoring of the main relevant parameters.

3.1 Missing measurements

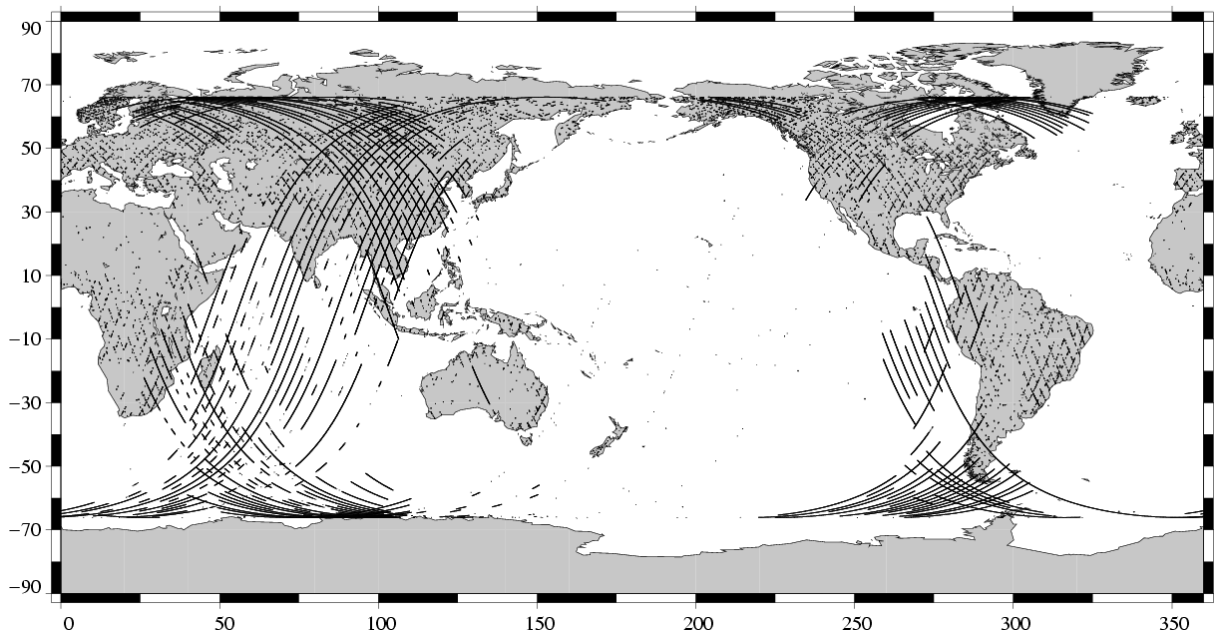
693040 altimeter measurements are present, and 101501 are missing.

The map below shows all the available measurements for this cycle and illustrates the tape recorder problems. The latter figure shows missing 1Hz measurements in the GDRs, with respect to a 1 Hz sampling of a nominal repeat track.

Available measurements
TOPEX Cycle 429 (07/05/2004 / 16/05/2004)



Missing measurements
TOPEX/Poseidon Cycle 429 (07/05/2004 / 16/05/2004)



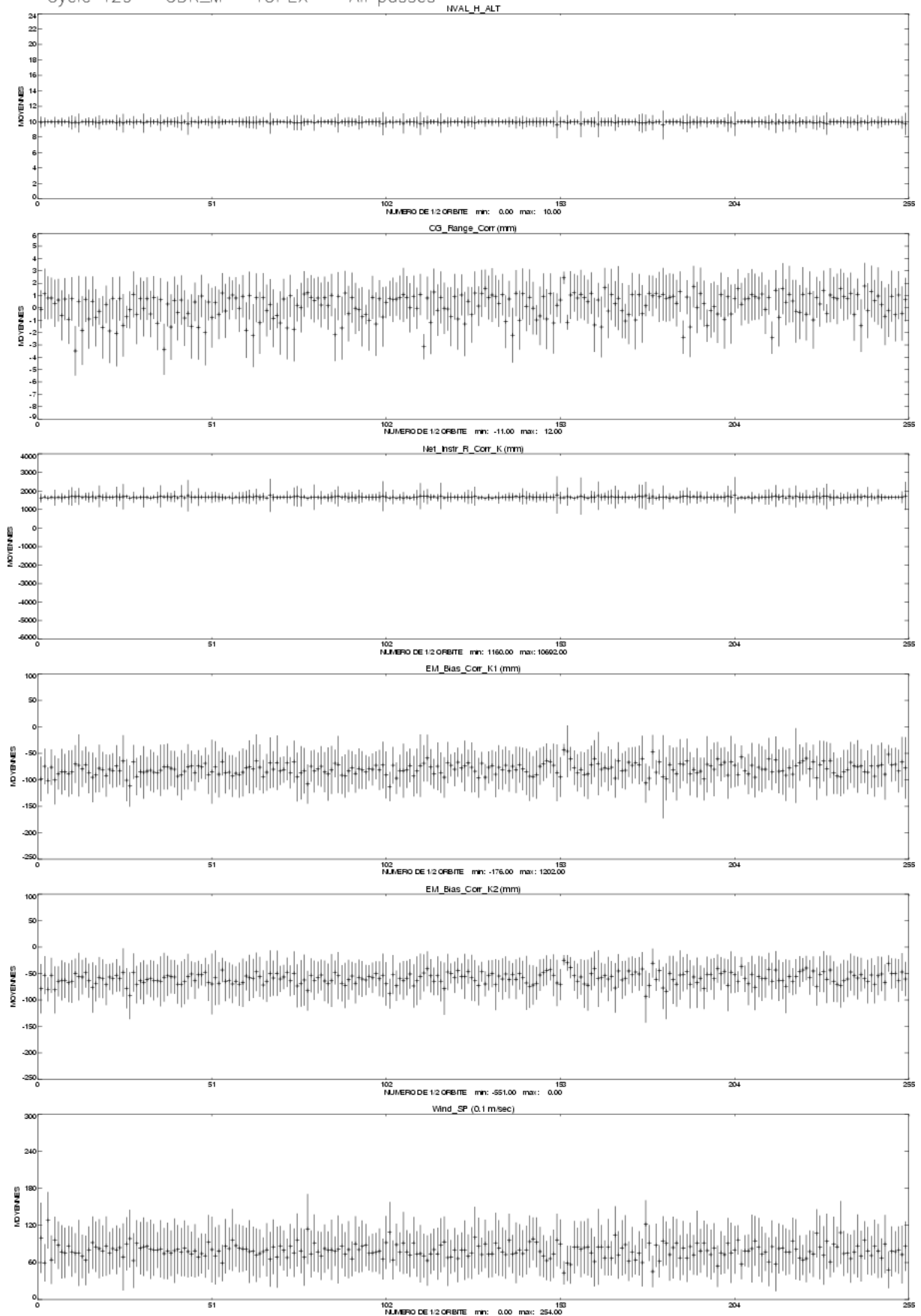
3.2 M-GDR quality flags

The following table indicates the percentage of measurements for which those flags are set.

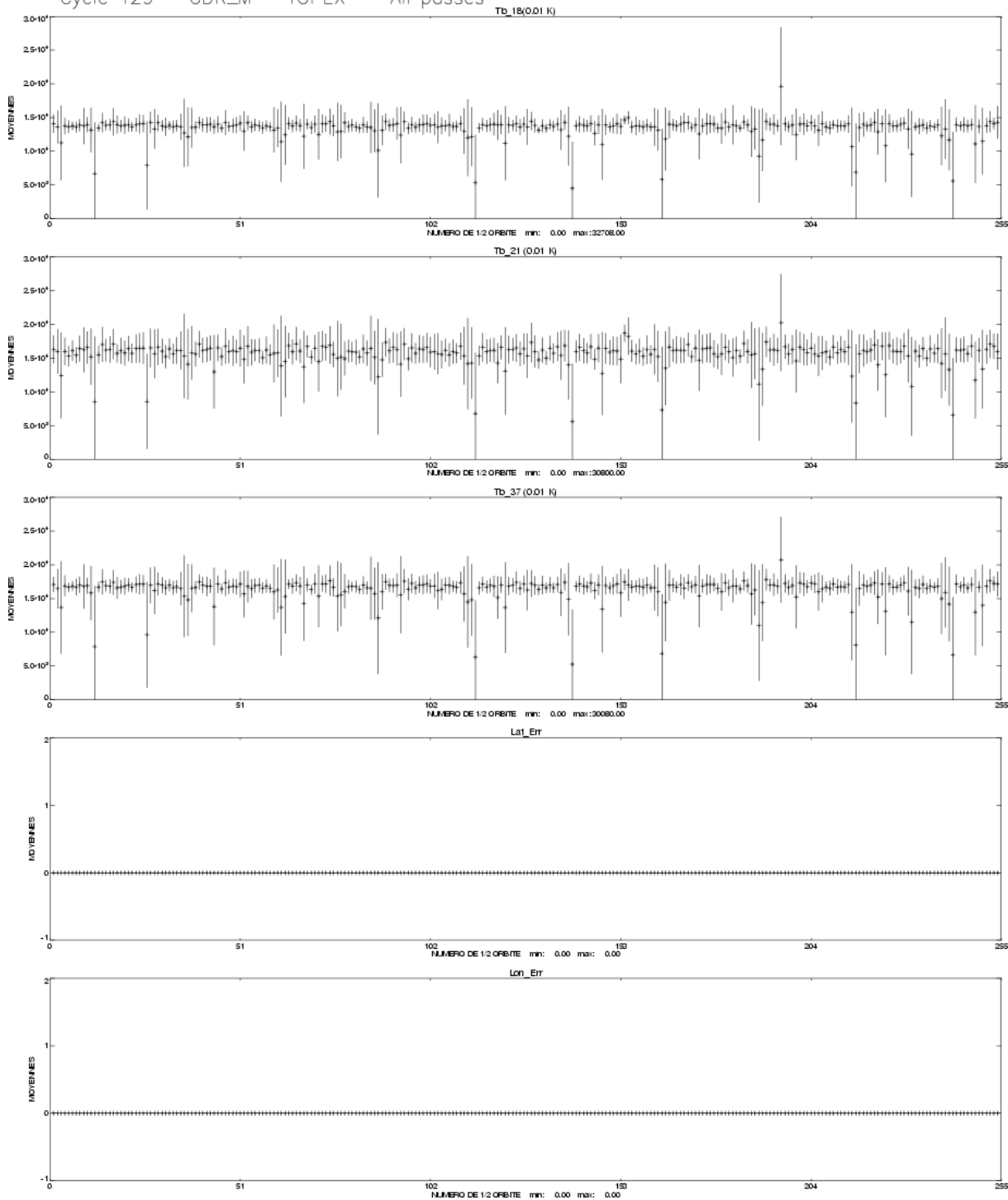
Name	Description	% bad
Geo_Bad_1	altimeter land flag	26.15
Geo_Bad_1	ice flag	4.64
Geo_Bad_1	radiometer land flag	27.60
Alt_Bad_1	conditions 1 altimeter	4.61
Alt_Bad_2	conditions 2 altimeter	4.51
Geo_Bad_2	rain (liquid water in excess)	5.94
Geo_Bad_2	less than 4 points for CSR3.0 tide calculation	0.35
Geo_Bad_2	less than 4 points for FES95.2.1 tide calculation	2.67
TOPEX	TOPEX not valid	0.00
TMR	TMR not valid	0.00
TMR_Bad	Brightness temperatures not valid	5.58
DORIS	DORIS not valid	0.00

3.3 M-GDR parameter plots

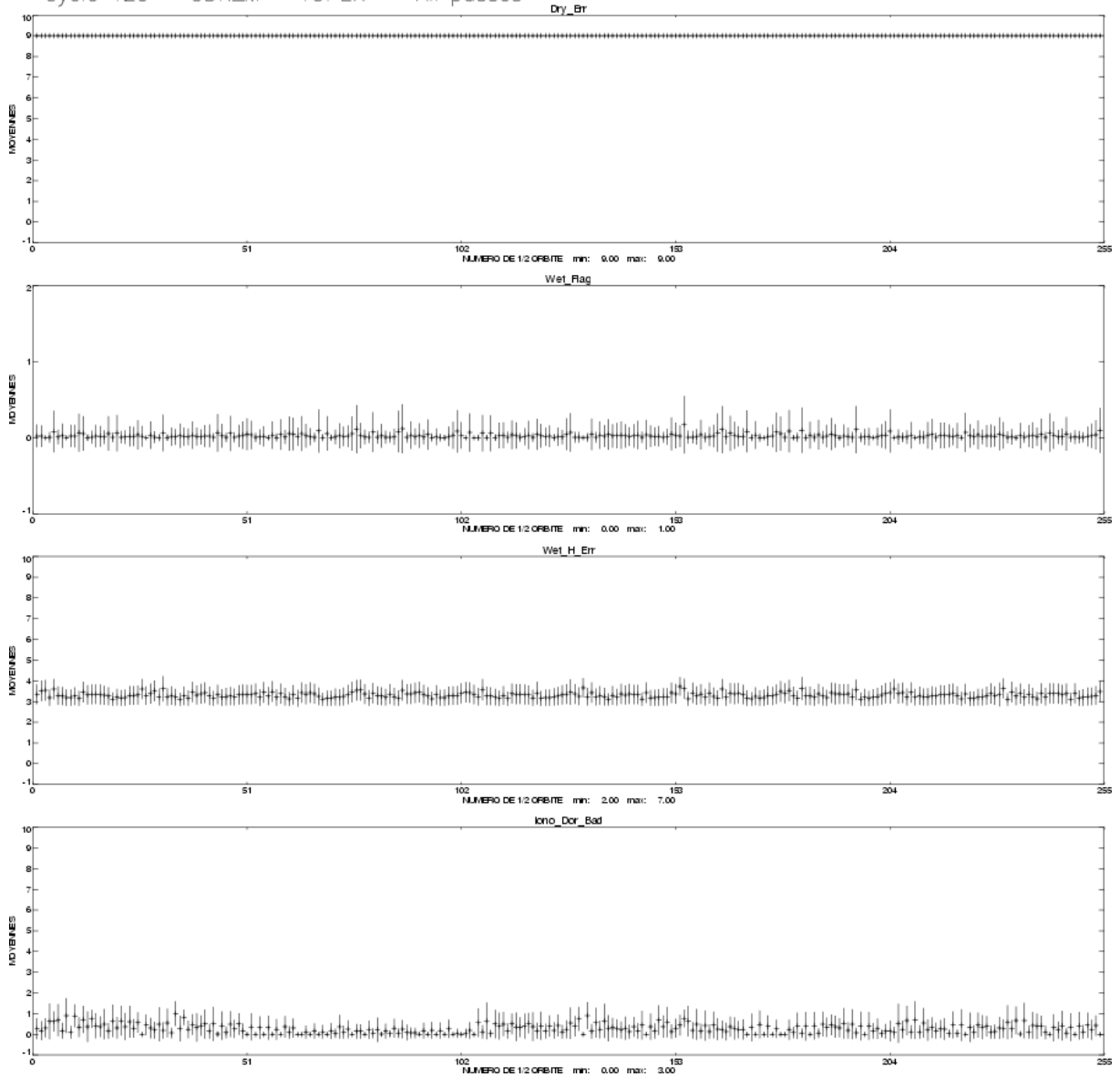
Cycle 429 – GDR_M – TOPEX – All passes –



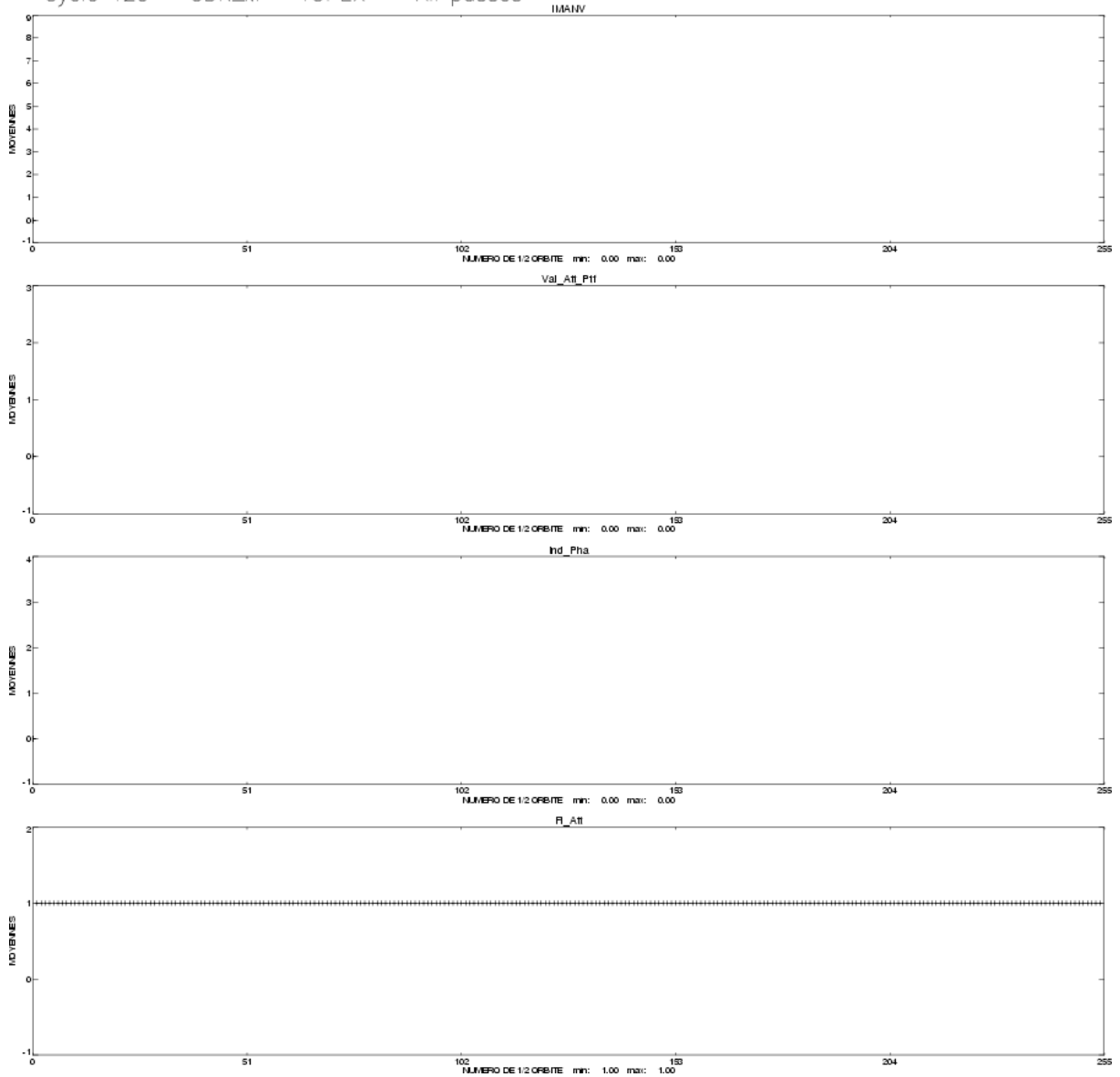
Cycle 429 – GDR_M – TOPEX – All passes –

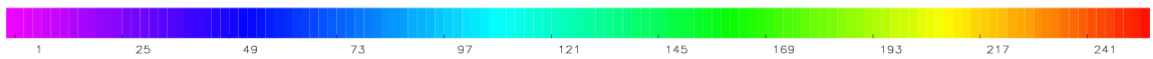
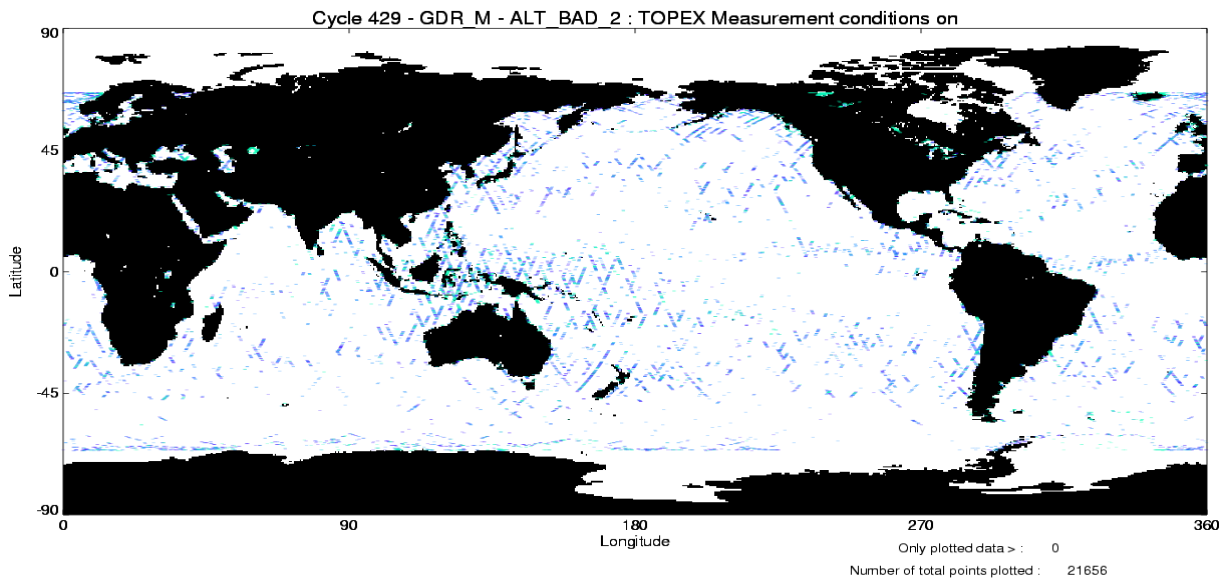
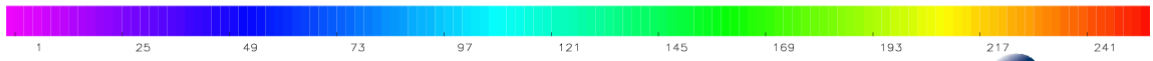
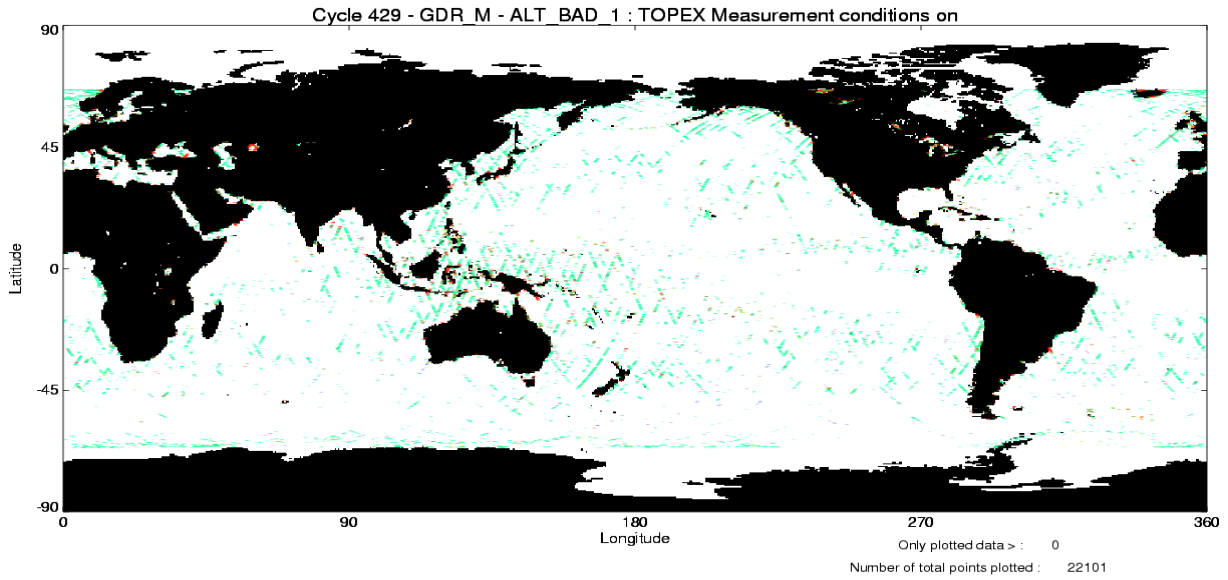


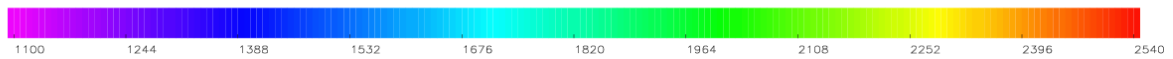
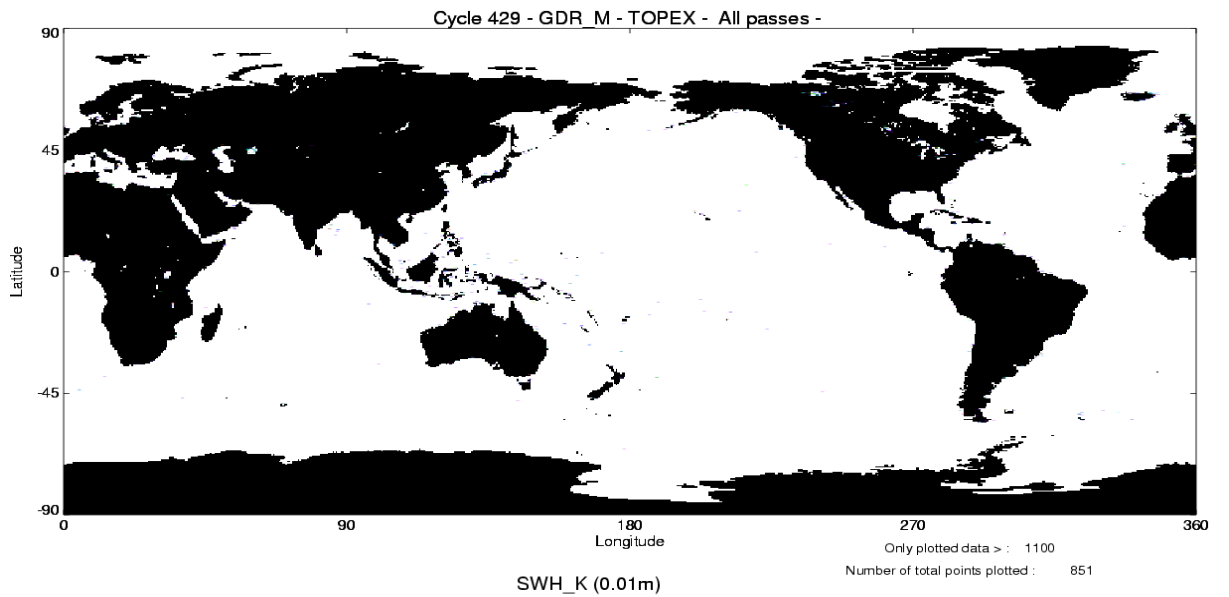
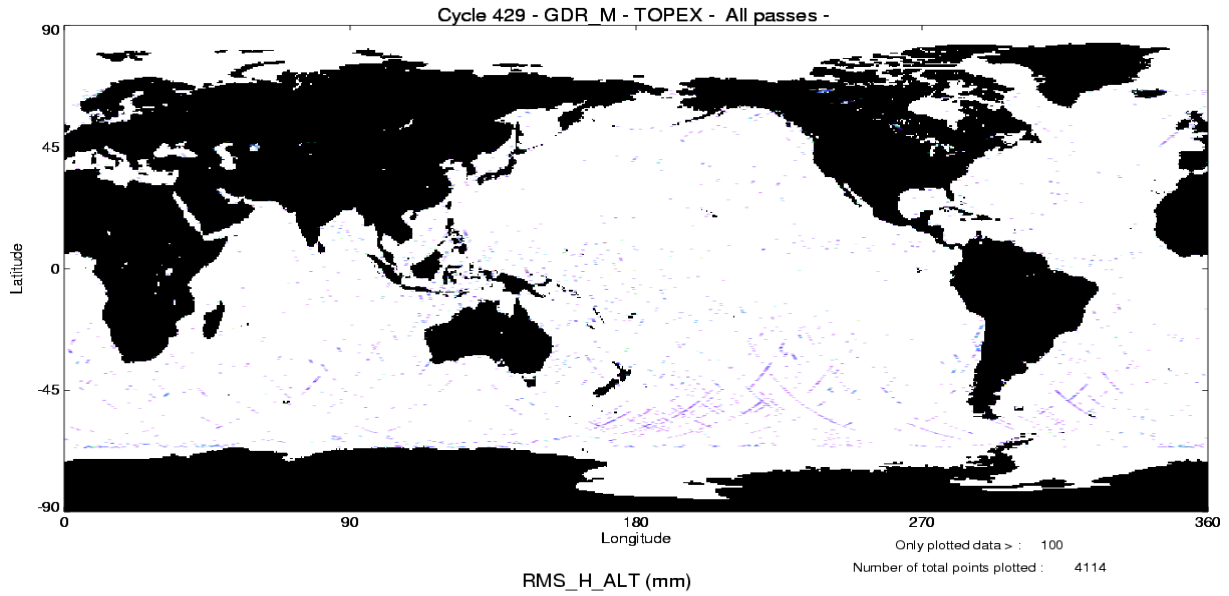
Cycle 429 – GDR_M – TOPEX – All passes –

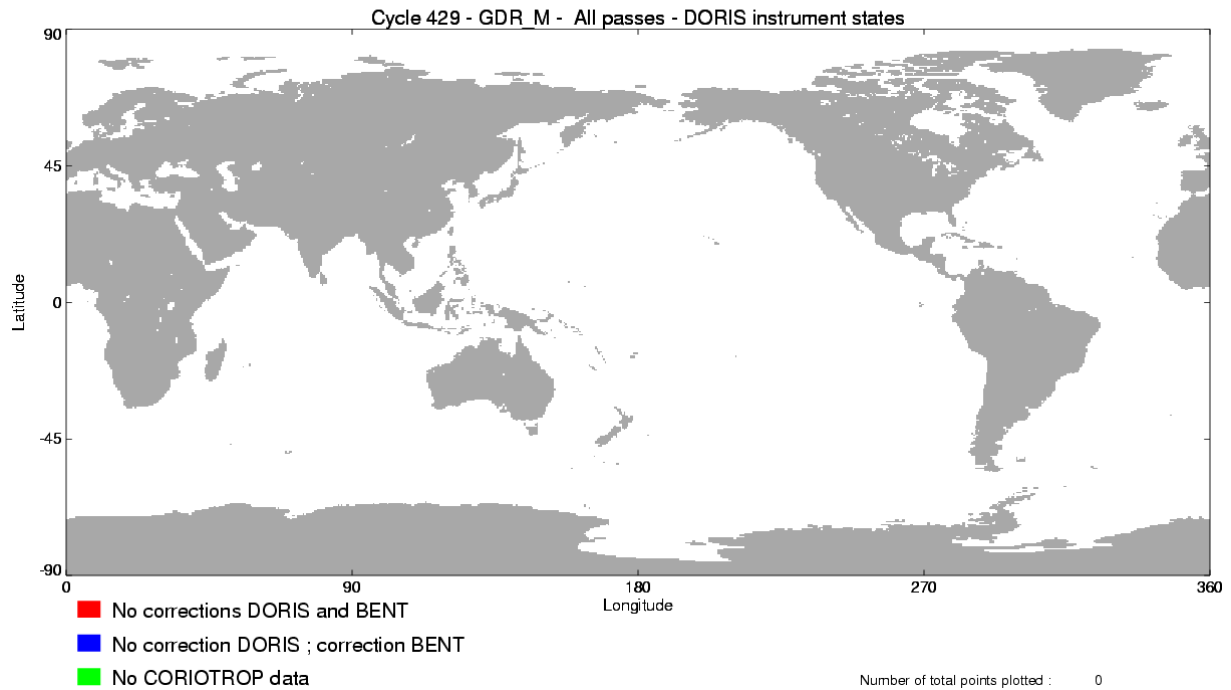


Cycle 429 – GDR_M – TOPEX – All passes –









3.4 Editing

The following table gives for each tested parameter, minimum and maximum thresholds, the number and the percentage of points removed. As a comparison, the mean percentage over one year (1997) is also given.

There are problems in the interpolation of the TMR parameters since cycle 371 when there are missing measurements (tape recorder failures). These bad measurements are removed by the TMR correction criterion but some of them have been kept. Thus a new criterion has been added to the editing procedure since the cycle 376 to remove all the measurements where the absolute value of the difference between the TMR correction and the ECMWF model wet tropospheric correction is greater than 20 cm.

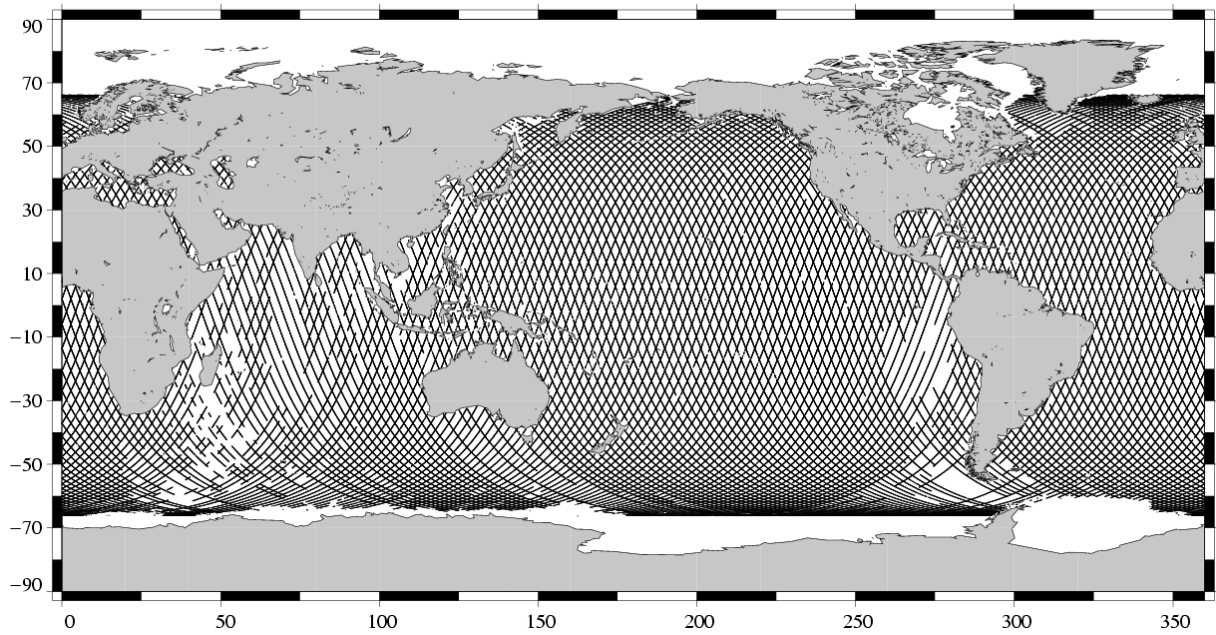
Probably due to the interpolation problem with the TMR, some measurements have radiometer land flag unset over land. This has no impact on the valid data because these measurements have been edited by the altimetric parameter criteria. Nevertheless, this anomaly leads to wrong statistics of the edited measurements. Therefore a new criterion has been added in the editing procedure to remove all the measurements for which the radiometer land flag is set to ocean and the altimeter land flag is set to land.

The number and percentage of points removed by each criterion is given on the following table. Note that these statistics are obtained with measurements already edited for radiometer land flag (27.60 % of points removed) and ice flag (4.64 % of points removed).

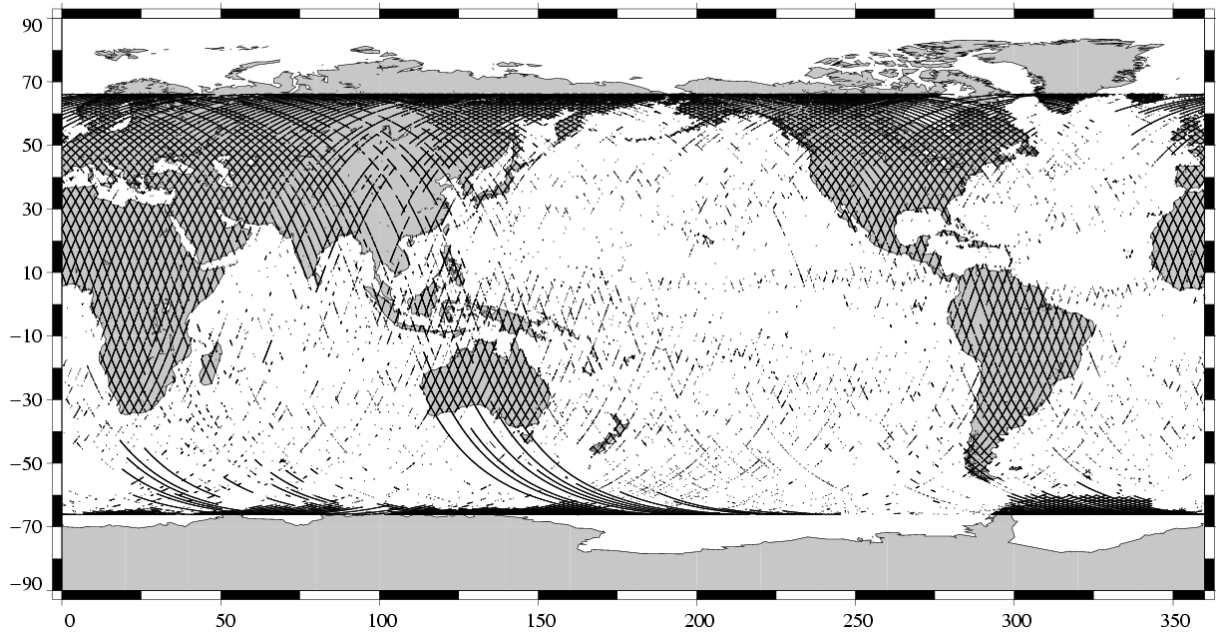
Parameters	Min Thres.	Max Thres.	Unit	Mean % removed in 1997	% removed
Sea surface height	-130.000	100.000	m	1.37	0.17
Number of 20/10Hz valid points Poseidon/TOPEX	5.000	-		1.37	0.21
Std. deviation of range	0.000	0.100	m	1.85	0.89
Off nadir angle from waveform	0.000	0.400	deg	1.36	3.11
Dry tropospheric correction	-2.500	-1.900	m	0.00	0.00
Invert barometer correction	-2.000	2.000	m	0.00	0.00
TMR wet tropospheric correction	-0.500	-0.001	m	0.34	3.08
Ionospheric correction (Poseidon:Doris, TOPEX: Dual)	-0.400	0.040	m	0.00	0.23
Significant wave height	0.000	11.000	m	1.46	0.08
Sea state Bias	-0.500	0.000	m	1.39	0.15
Backscatter coefficient	7.000	30.000	dB	1.44	0.16
Ocean tide height	-5.000	5.000	m	0.01	0.16
Earth tide	-1.000	1.000	m	0.00	0.00
Pole tide	-15.000	15.000	m	0.00	0.00
TMR and ECMWF tropospheric differences	-0.200	0.200	m	NaN	0.28
Spline fitting					0.01

The following three maps are complementary: they show respectively the removed, the selected measurements and the percentage of selected measurements in the editing procedure.

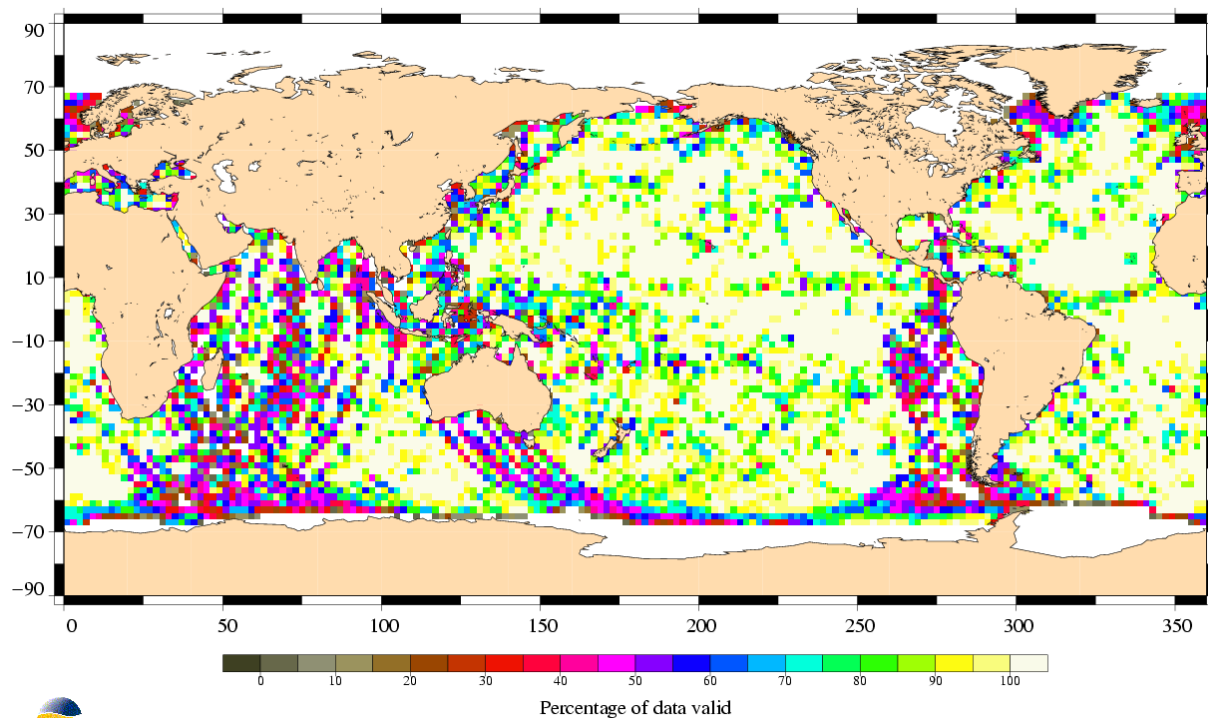
Valid data
TOPEX/Poseidon Cycle 429 (07/05/2004 / 16/05/2004)



Edited measurements
TOPEX Cycle 429 (07/05/2004 / 16/05/2004)

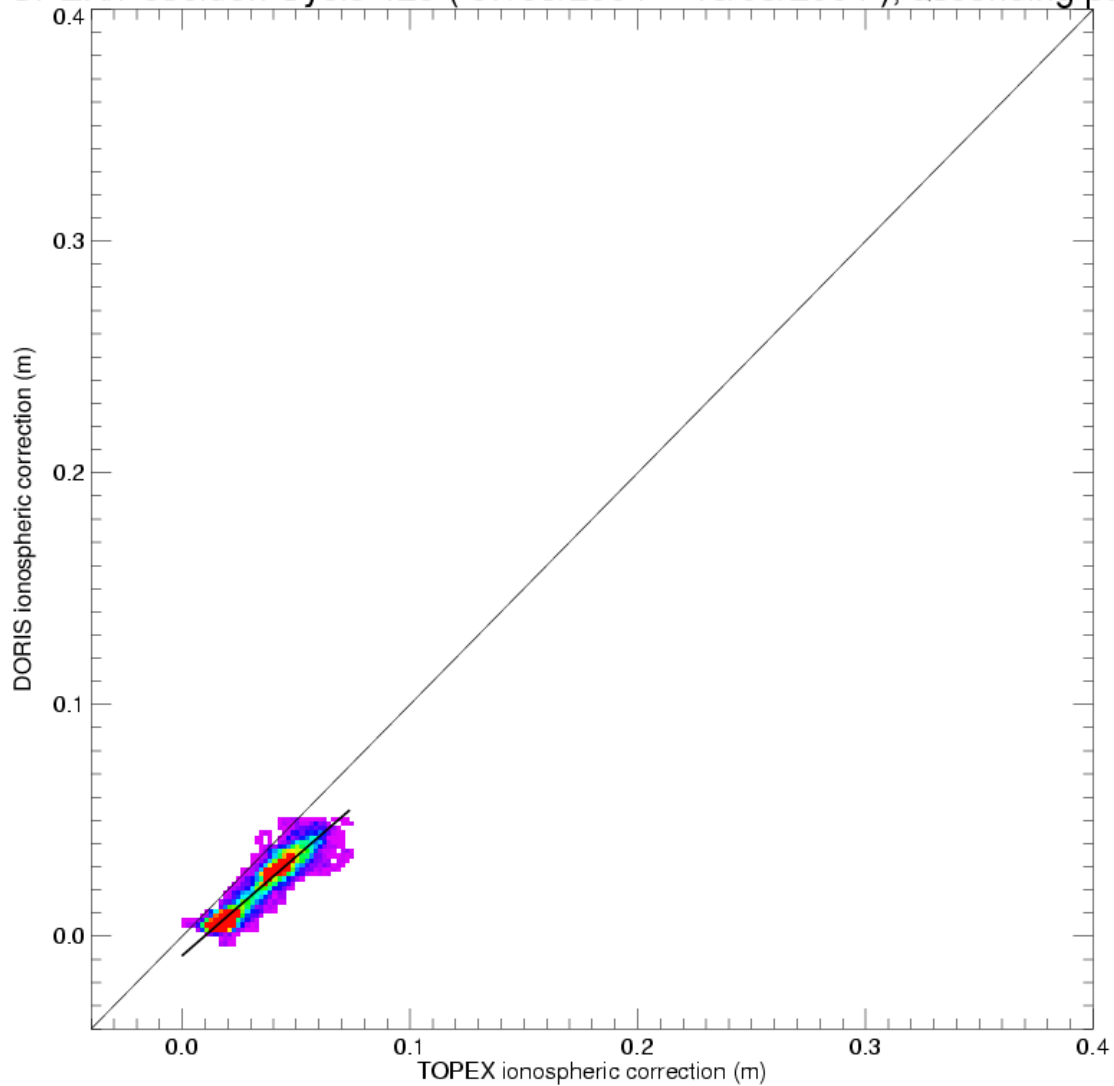


Percentage of valid data relative to the nominal pass
TOPEX/Poseidon Cycle 429 (07/05/2004 / 16/05/2004)

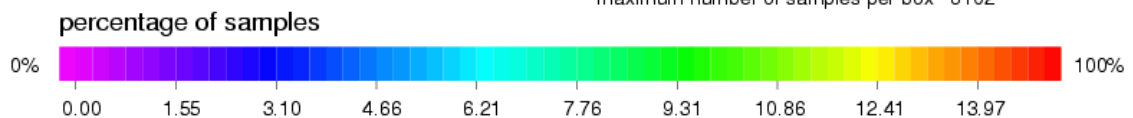


3.5 Ionospheric correction

TOPEX/Poseidon Cycle 429 (07/05/2004 – 16/05/2004), ascending passes



minimum number of samples per box 1
 maximum number of samples per box 8102



Statistics Y-X

mean = -0.01283
 rms = 0.01369
 std = 0.00476

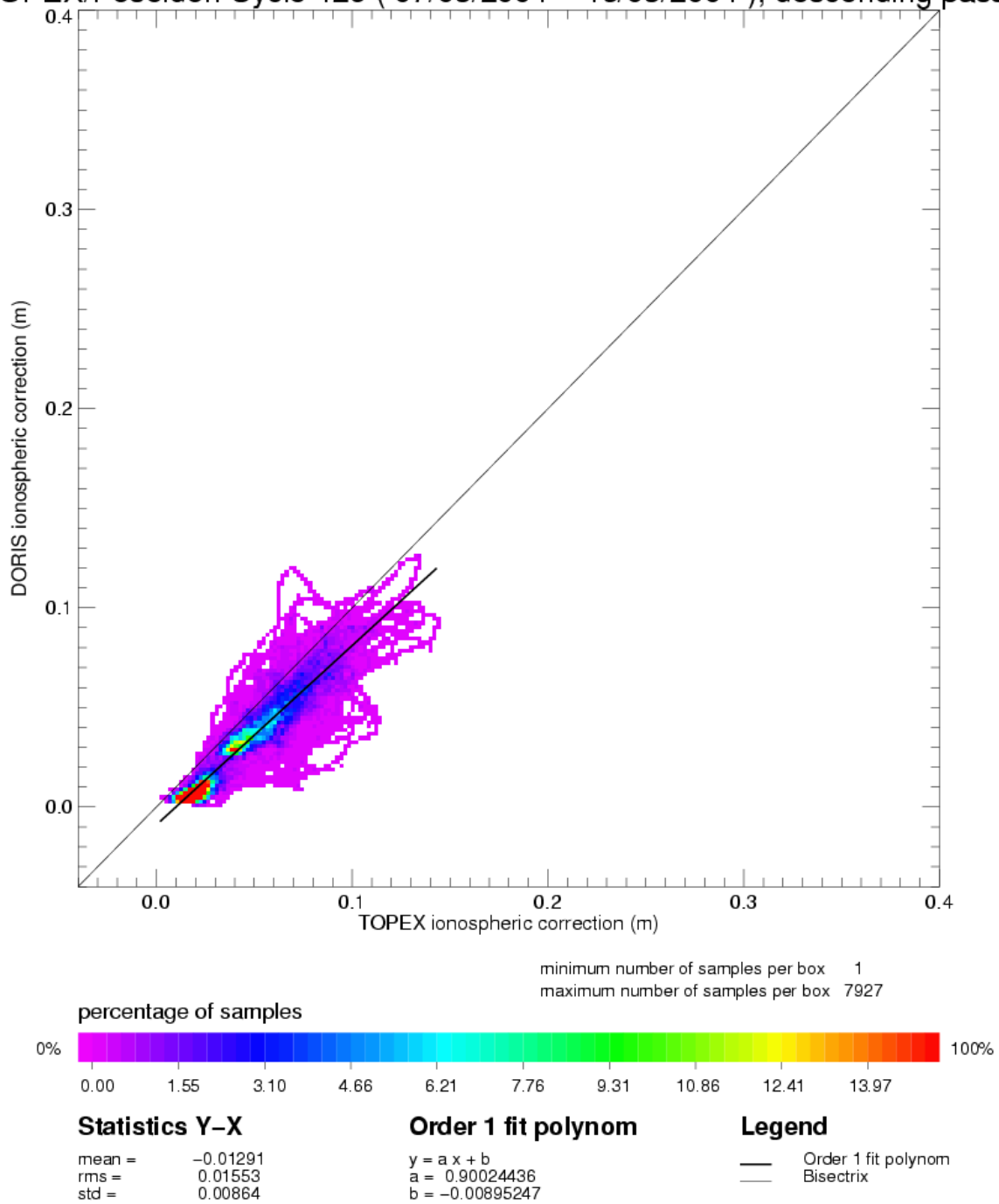
Order 1 fit polynomial

$y = a x + b$
 $a = 0.85408300$
 $b = -0.00833674$

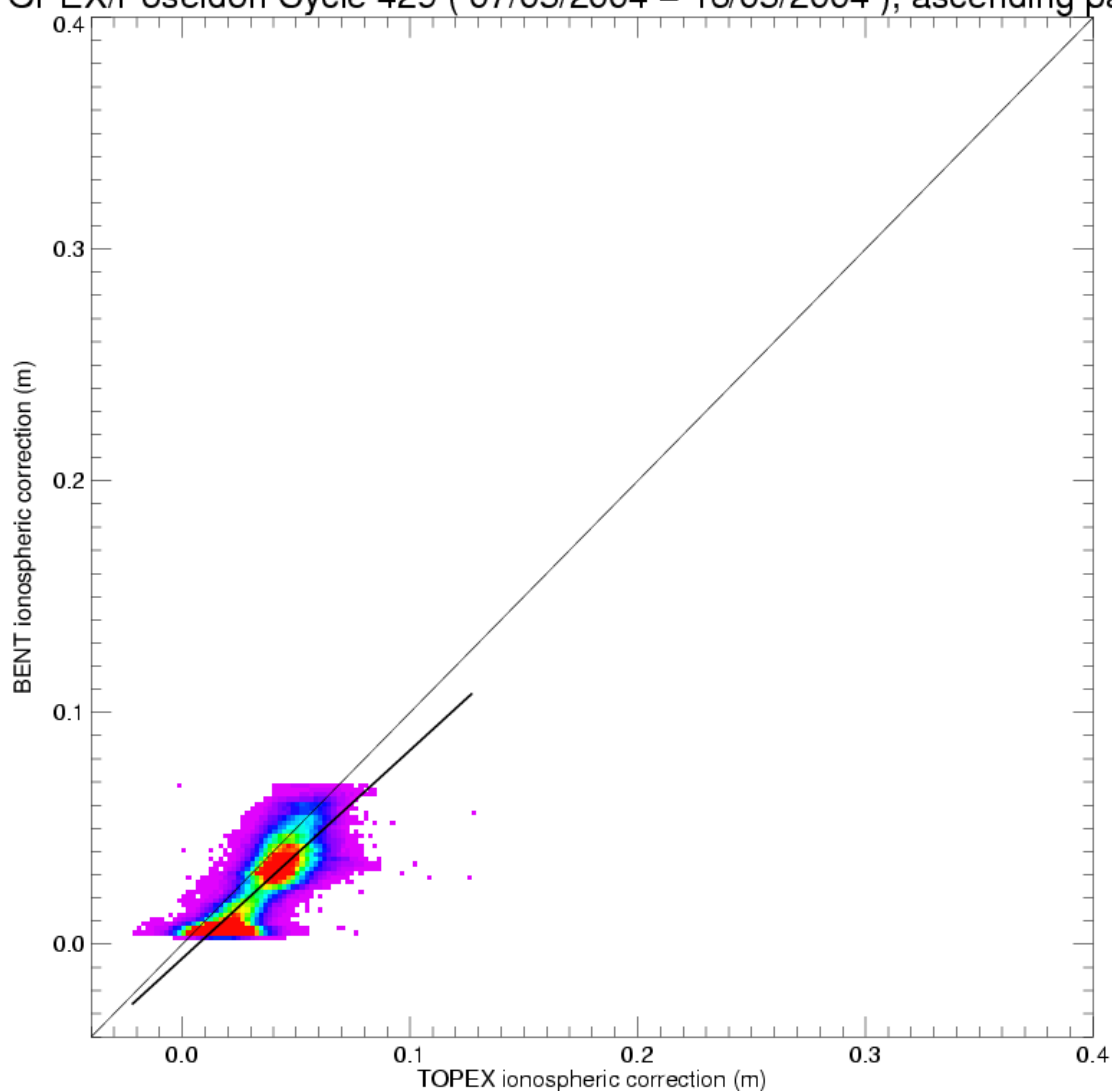
Legend

— Order 1 fit polynomial
 — Bisectrix

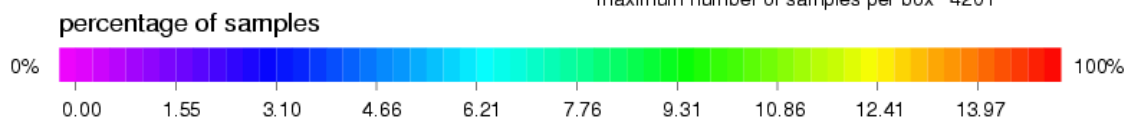
TOPEX/Poseidon Cycle 429 (07/05/2004 – 16/05/2004), descending passes



TOPEX/Poseidon Cycle 429 (07/05/2004 – 16/05/2004), ascending passes



minimum number of samples per box 1
 maximum number of samples per box 4201



Statistics Y-X

mean = -0.00931
 rms = 0.01289
 std = 0.00891

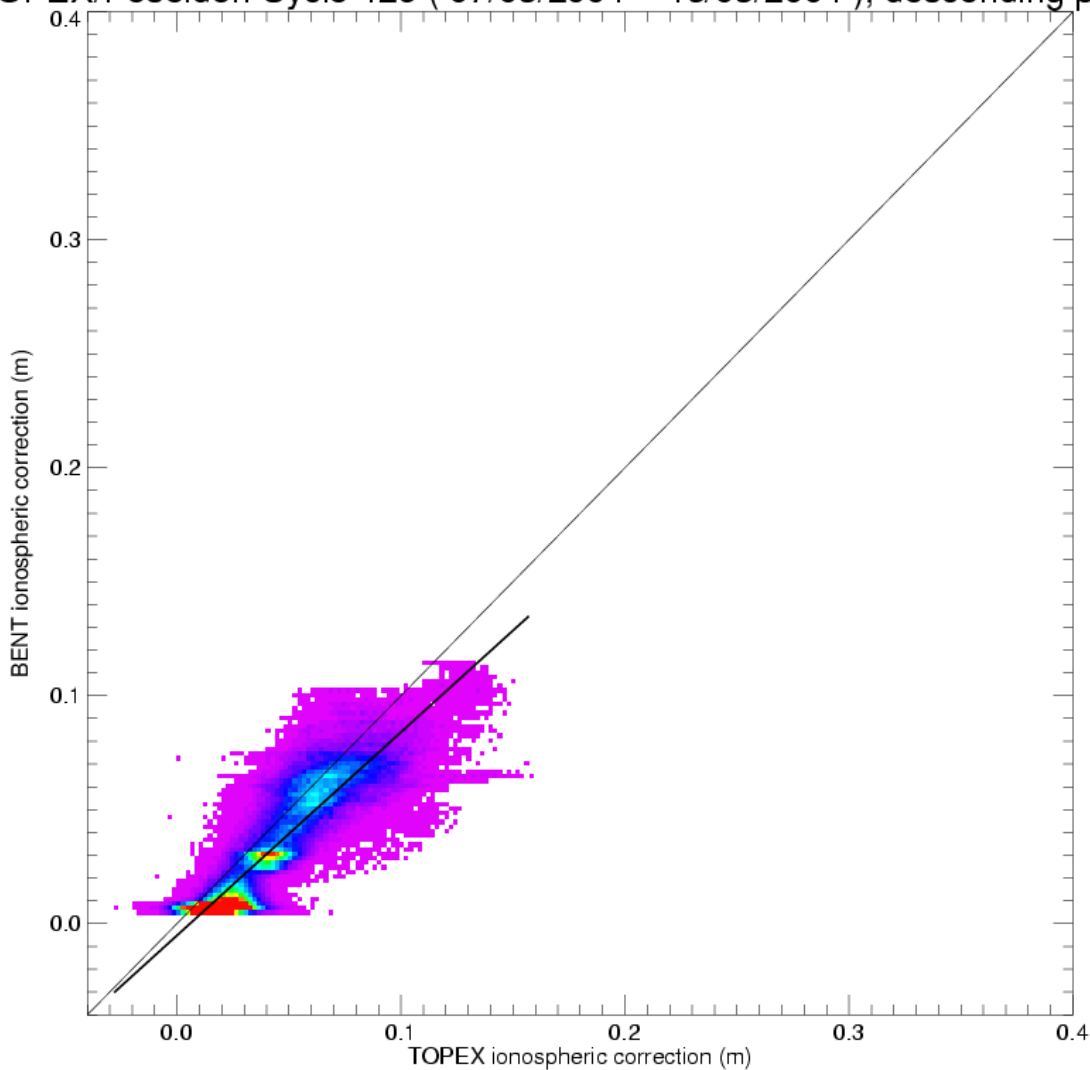
Order 1 fit polynom

$y = a x + b$
 $a = 0.89854538$
 $b = -0.00613147$

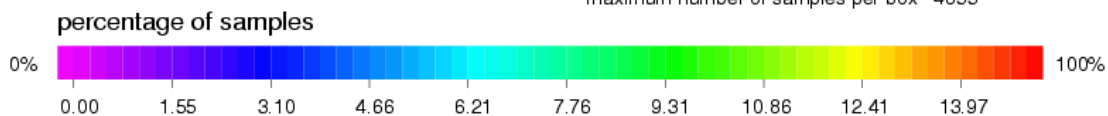
Legend

— Order 1 fit polynom
 — Bisectrix

TOPEX/Poseidon Cycle 429 (07/05/2004 – 16/05/2004), descending passes



minimum number of samples per box 1
 maximum number of samples per box 4855



Statistics Y-X

mean = -0.00953
 rms = 0.01512
 std = 0.01173

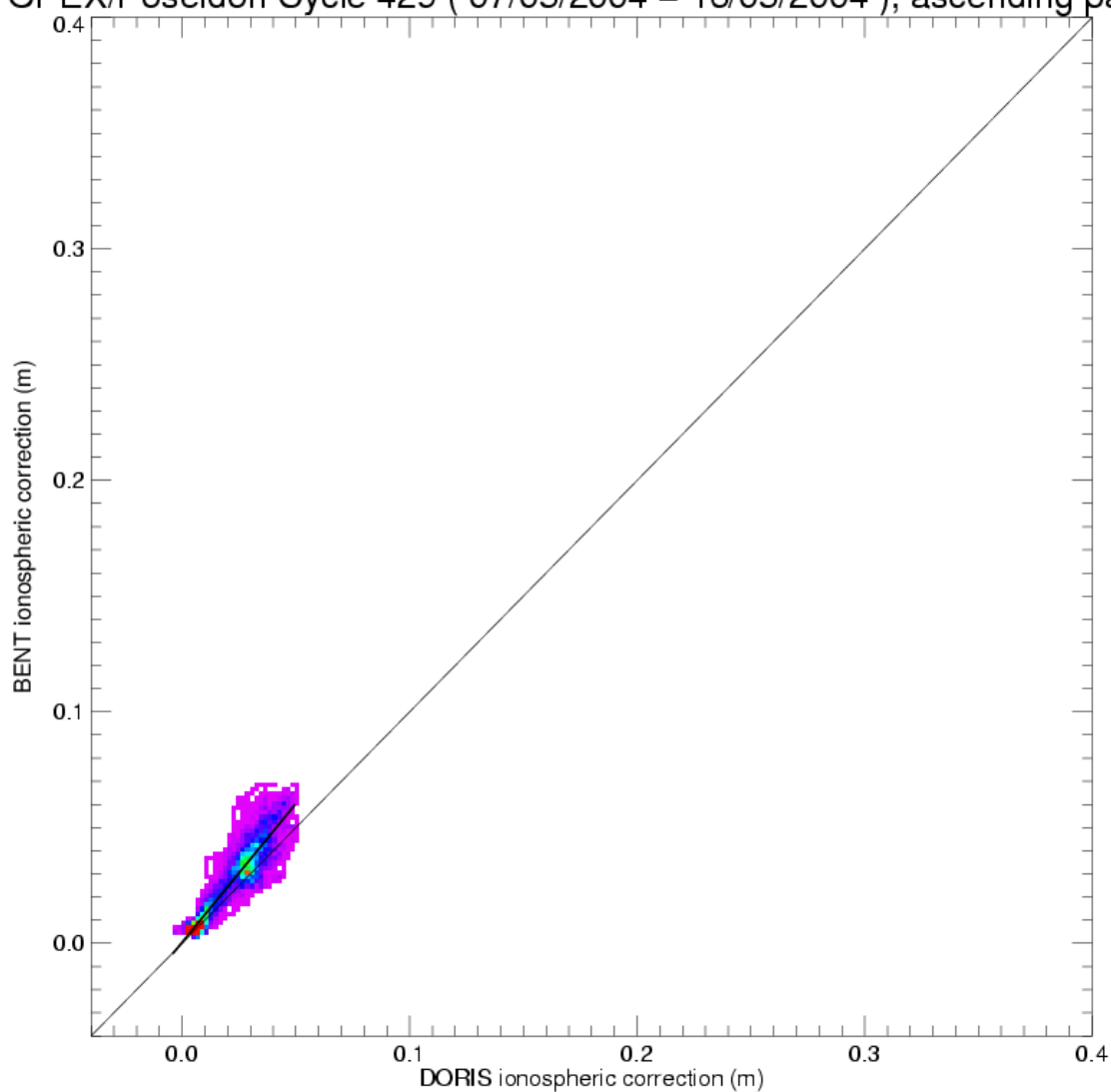
Order 1 fit polynom

$y = a x + b$
 $a = 0.89179111$
 $b = -0.00519036$

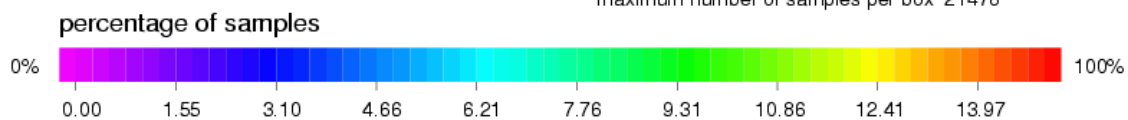
Legend

— Order 1 fit polynom
 - - - Bisectrix

TOPEX/Poseidon Cycle 429 (07/05/2004 – 16/05/2004), ascending passes



minimum number of samples per box 1
 maximum number of samples per box 21478



Statistics Y-X

mean = 0.00401
 rms = 0.00729
 std = 0.00608

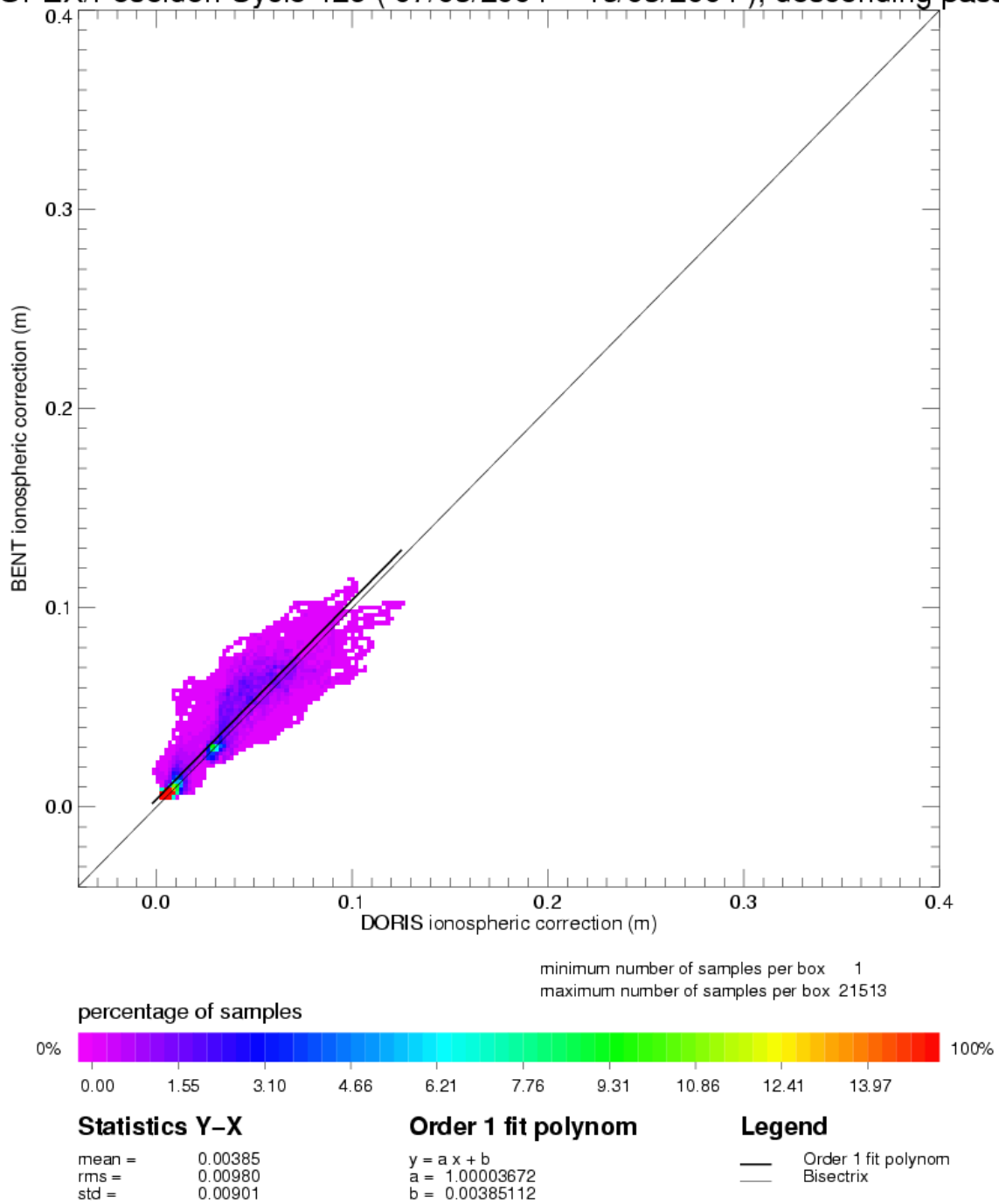
Order 1 fit polynom

$y = a x + b$
 $a = 1.19831157$
 $b = 0.00044535$

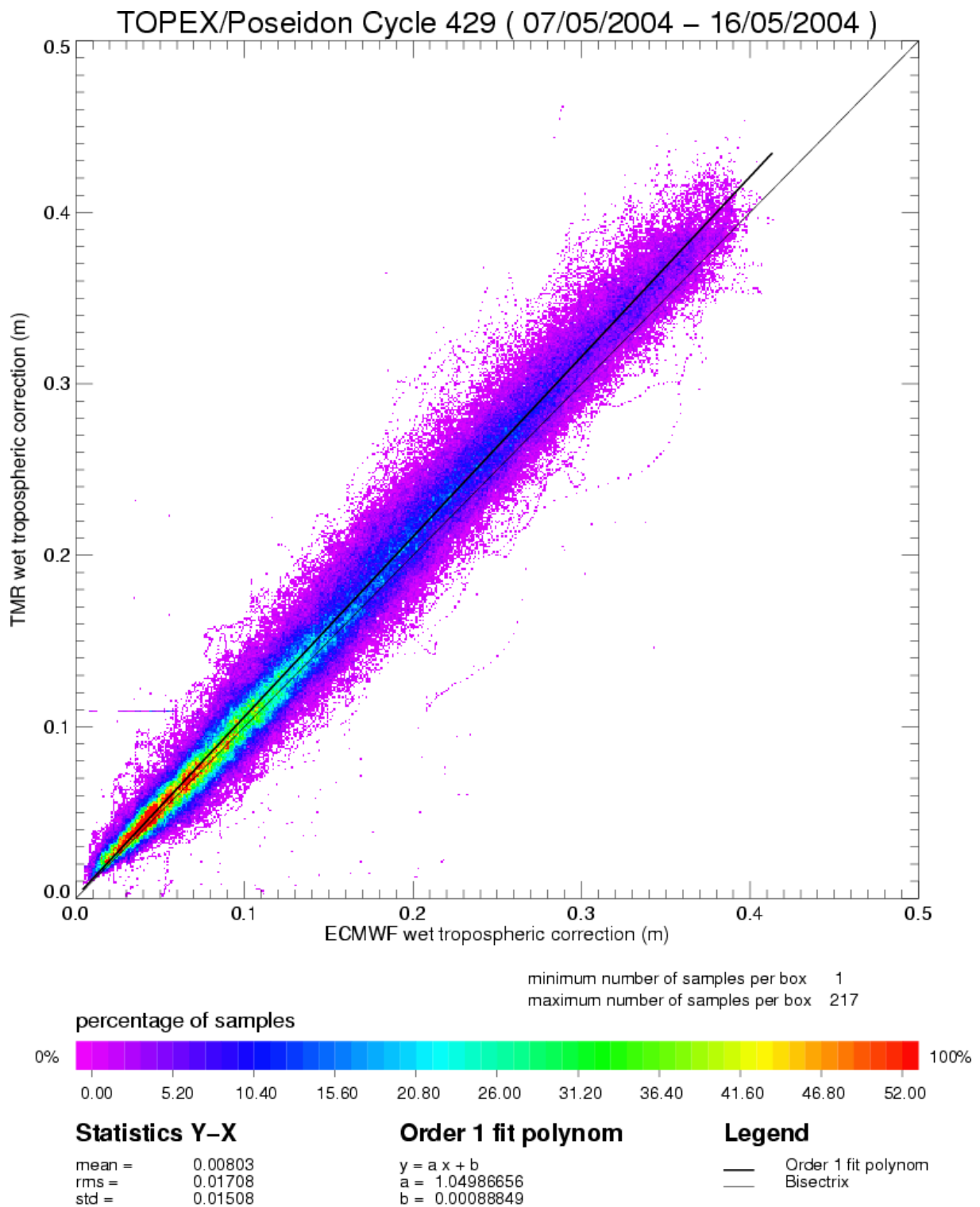
Legend

— Order 1 fit polynom
 — Bisectrix

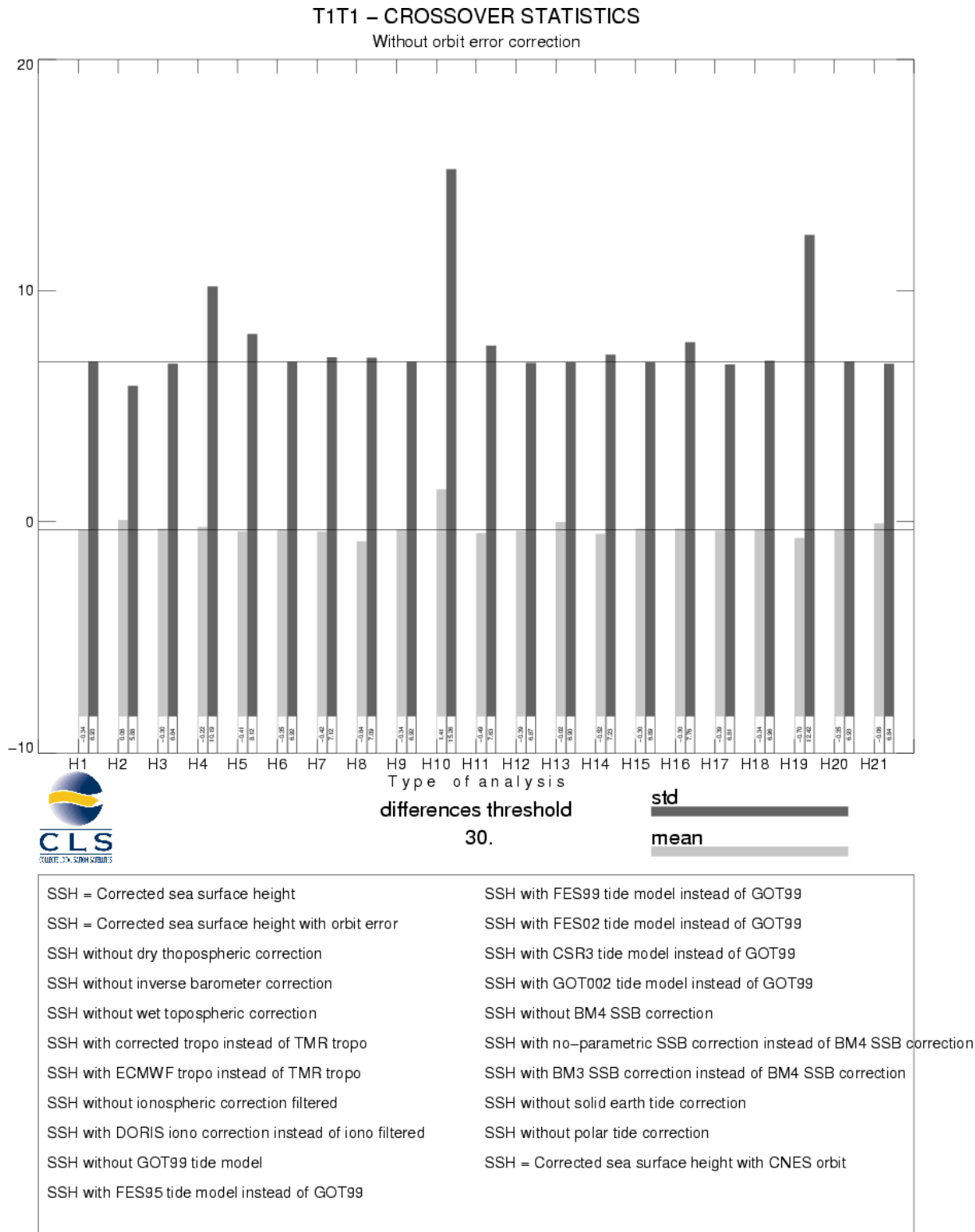
TOPEX/Poseidon Cycle 429 (07/05/2004 – 16/05/2004), descending passes



3.6 Wet tropospheric correction



3.7 Crossover statistics



T1T1 – CROSSOVER STATISTICS

Without orbit error correction

SSH = Corrected sea surface height

RAPPEL DES SELECTIONS

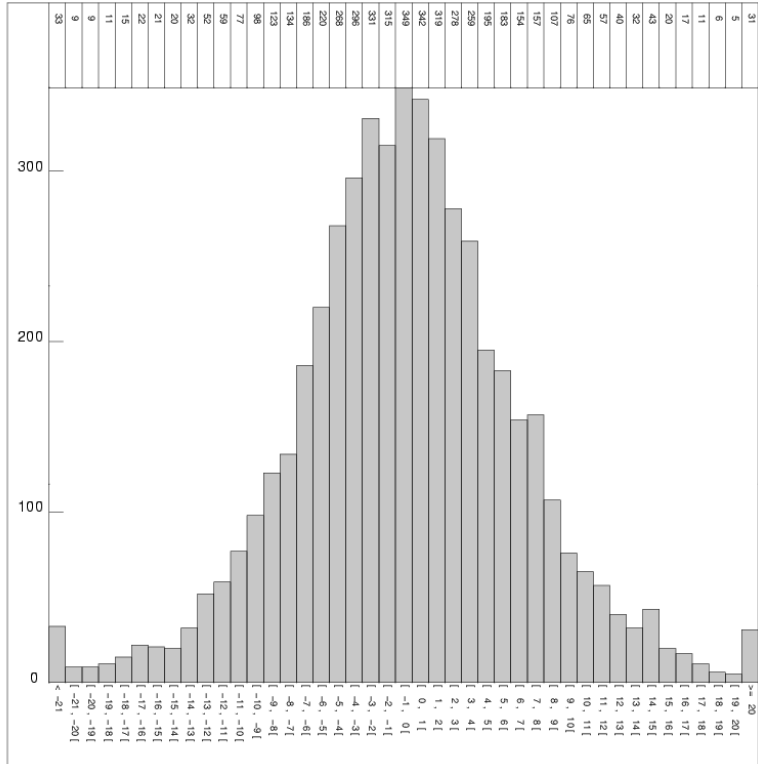
Type de points de croisement: T1T1
 Zone géographique (deg): -90 / 90 , 0 / 360
 Seuil sur les écarts d'analyse 0.00 (moy) 30.00 (seuil)
 Selection(s) sur les champs :
 CL Arc 1 :=INTERP_SPLN
 CL Arc 2 :=INTERP_SPLN
 Seuil Min +: 0.0000000
 Seuil Max : 0.0000000

Selection(s) sur les écarts :
 Aucune

RESULTATS STATISTIQUES

Valeur minimale : -28.8600
 Valeur maximale : 29.8900
 Différence Max – Min: 58.7500
 Nombre de points lus: 5183
 Nombre de points sélectionnés: 5077
 Moyenne : -0.344000
 Écart-type : 6.92555
 Moyenne Quadratique : 6.93409

CLS Space Oceanography Division



T1T1 – CROSSOVER STATISTICS

With orbit error correction

SSH = Corrected sea surface height

RAPPEL DES SELECTIONS

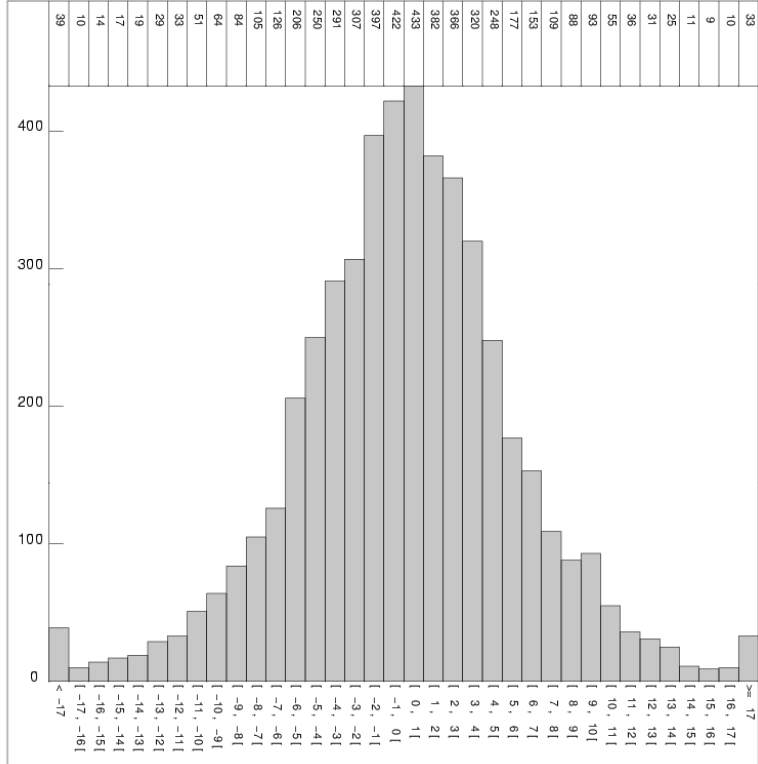
Type de points de croisement: T1T1
 Zone géographique (deg): -90 / 90 , 0 / 360
 Seuil sur les écarts d'analyse 0.00 (moy) 30.00 (seuil)
 Selection(s) sur les champs :
 CL Arc 1 :=INTERP_SPLN
 CL Arc 2 :=INTERP_SPLN
 Seuil Min +: 0.0000000
 Seuil Max : 0.0000000

Selection(s) sur les écarts :
 Aucune

RESULTATS STATISTIQUES

Valeur minimale : -29.3800
 Valeur maximale : 29.3200
 Différence Max – Min: 58.7000
 Nombre de points lus: 5183
 Nombre de points sélectionnés: 5043
 Moyenne : 0.0839120
 Écart-type : 5.87881
 Moyenne Quadratique : 5.87941

CLS Space Oceanography Division



T1T1 – CROSSOVER STATISTICS
SSH, BATHY < -1000 m, VAR_OCE < 20 cm, LAT [-50°, +50]
SSH = Corrected sea surface height before orbit error

RAPPEL DES SELECTIONS

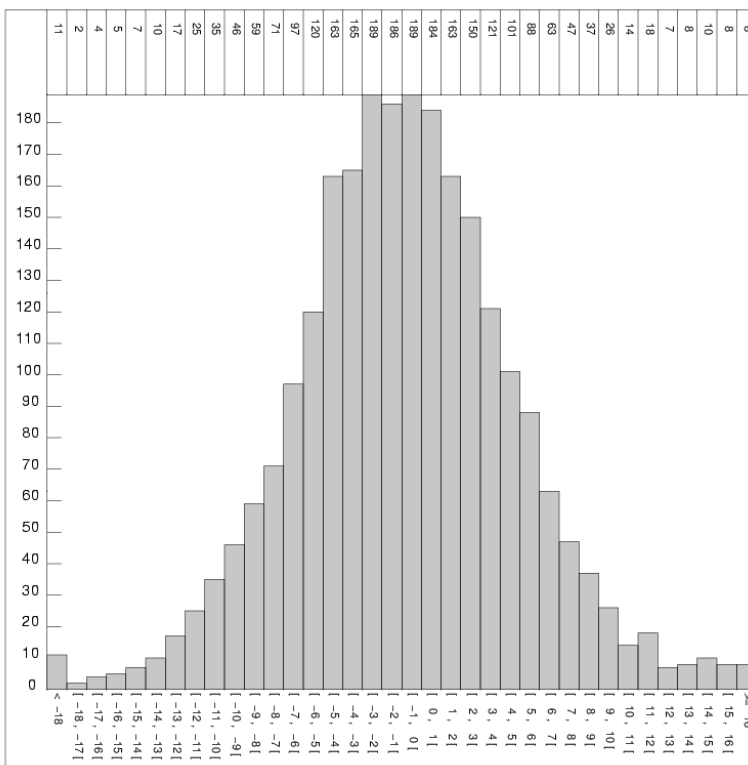
Type de points de croisement: T1T1
 Zone géographique (deg): -50 / 50 , 0 / 360
 Seuil sur les écarts d'analyse : aucun
 Selection(s) sur les champs :
 CL Arc 1 : =BATHY
 CL Arc 2 : =BATHY
 Seuil Min : aucun
 Seuil Max : -1000000.00
 CL Arc 1 : =VAR_OCE
 CL Arc 2 : =VAR_OCE
 Seuil Min : aucun
 Seuil Max : 20.000000
 [...]

 Selection(s) sur les écarts :
 Aucune

RESULTATS STATISTIQUES

Valeur minimale : -72.2600
 Valeur maximale : 25.7900
 Différence Max – Min: 98.0500
 Nombre de points lus: 2680
 Nombre de points sélectionnés: 2454
 Moyenne : -0.869588
 Ecart-type : 5.79293
 Moyenne Quadratique : 5.85783

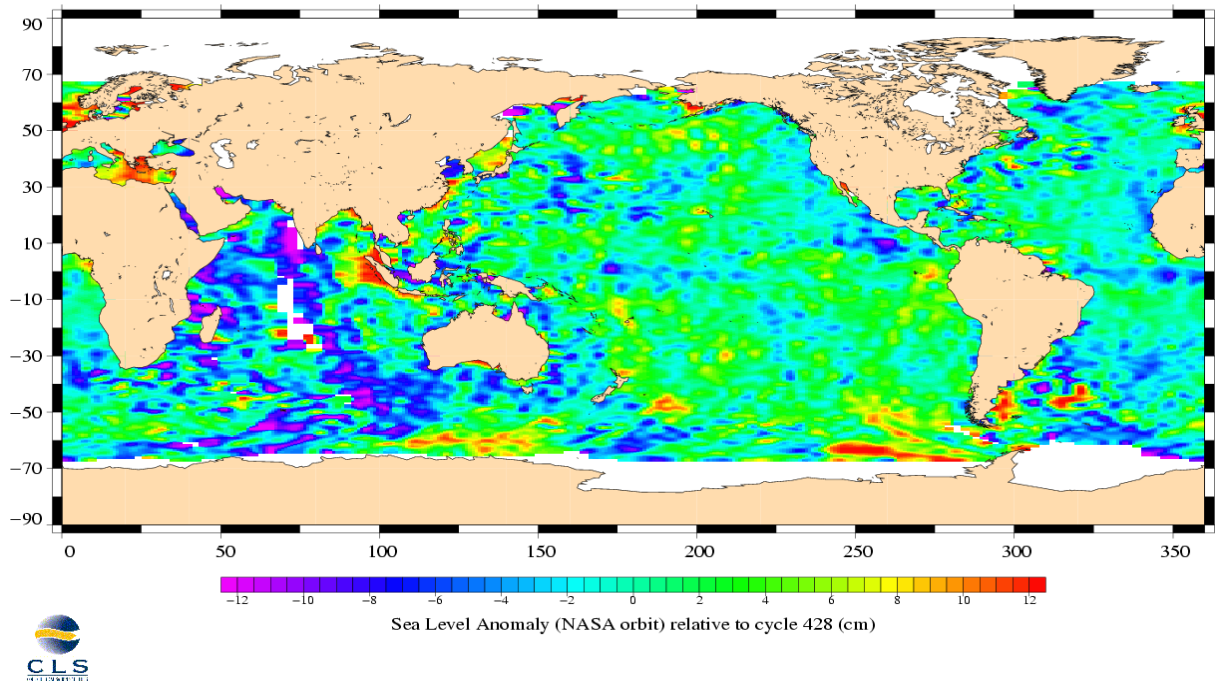
CLS Space Oceanography Division



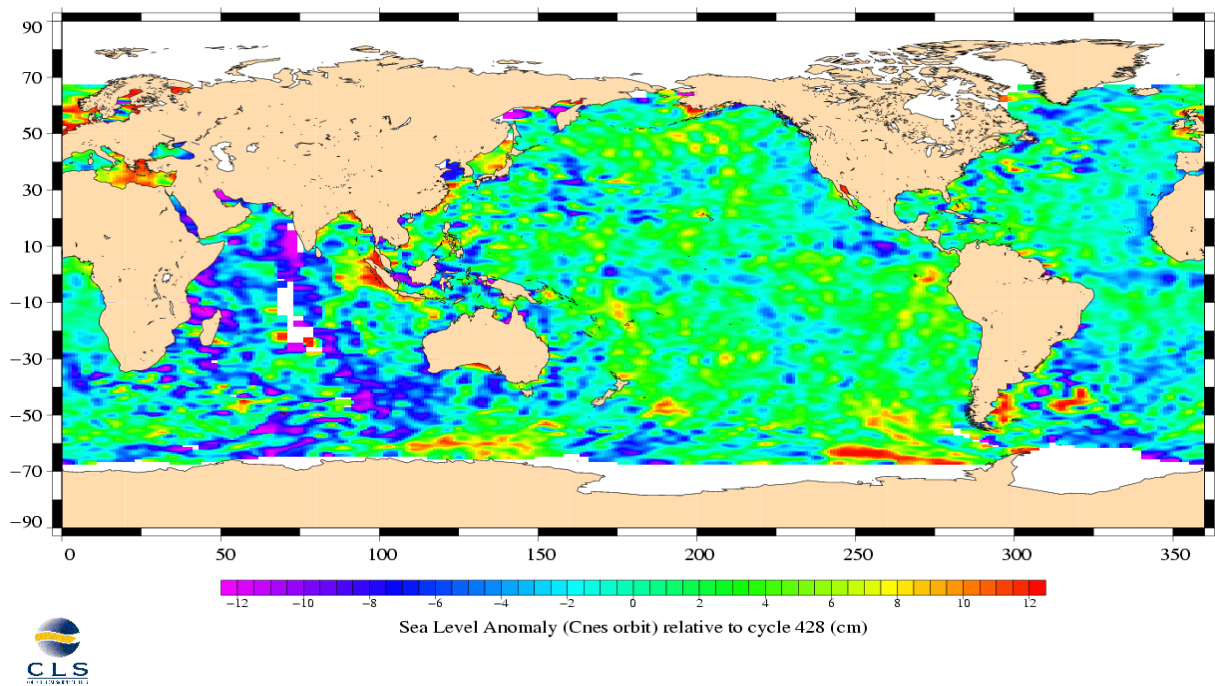
3.8 SSH variability

3.8.1 Sea Level Anomaly

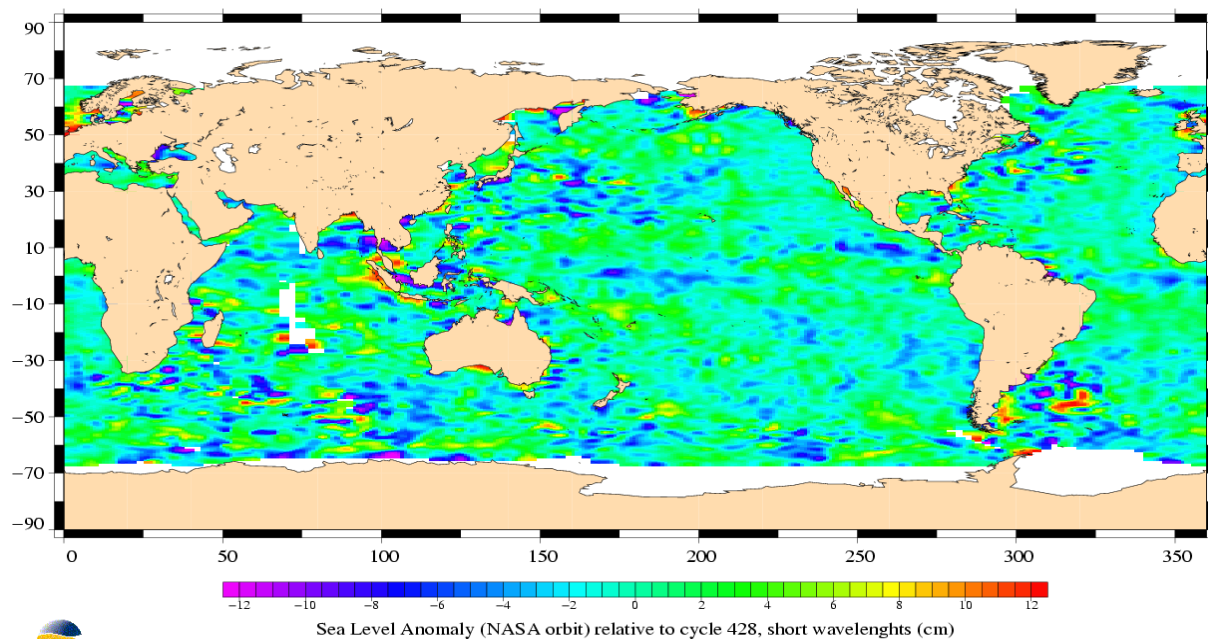
TOPEX/Poseidon, cycle 429
Period : 07/05/2004 – 16/05/2004



TOPEX/Poseidon, cycle 429
Period : 07/05/2004 – 16/05/2004



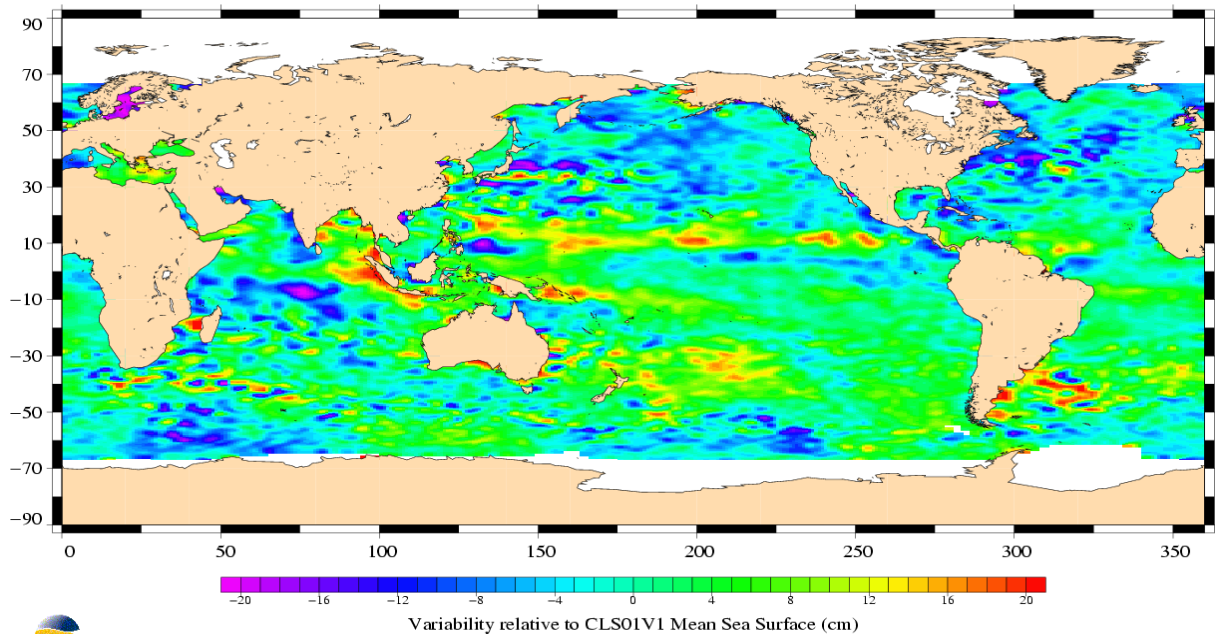
TOPEX/Poseidon, cycle 429
Period : 07/05/2004 – 16/05/2004



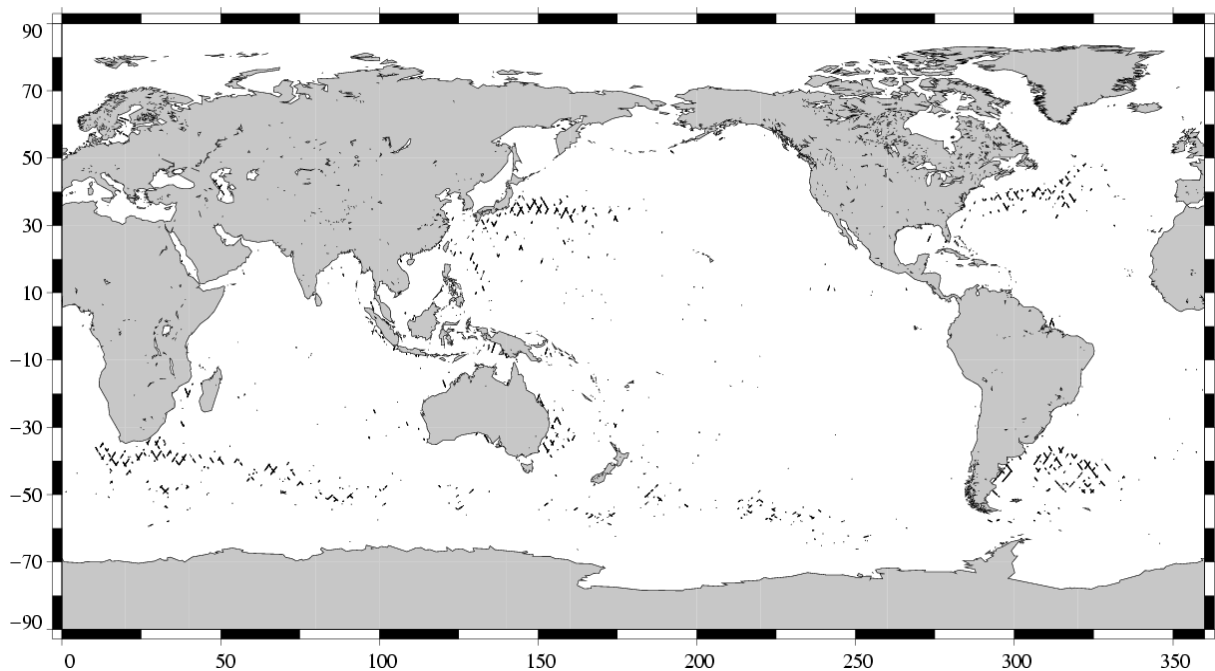
3.8.2 Comparison to a precise Mean Sea Surface

The CLS (2001) MSS model is used as a reference to compute SLA. The two following maps respectively show the map of Topex SLA relative to the MSS and differences higher than a 30 cm threshold (after centering the data). The latter figure shows that higher differences are located in high ocean variability areas, as expected.

TOPEX/Poseidon, cycle 429
Period : 07/05/2004 – 16/05/2004

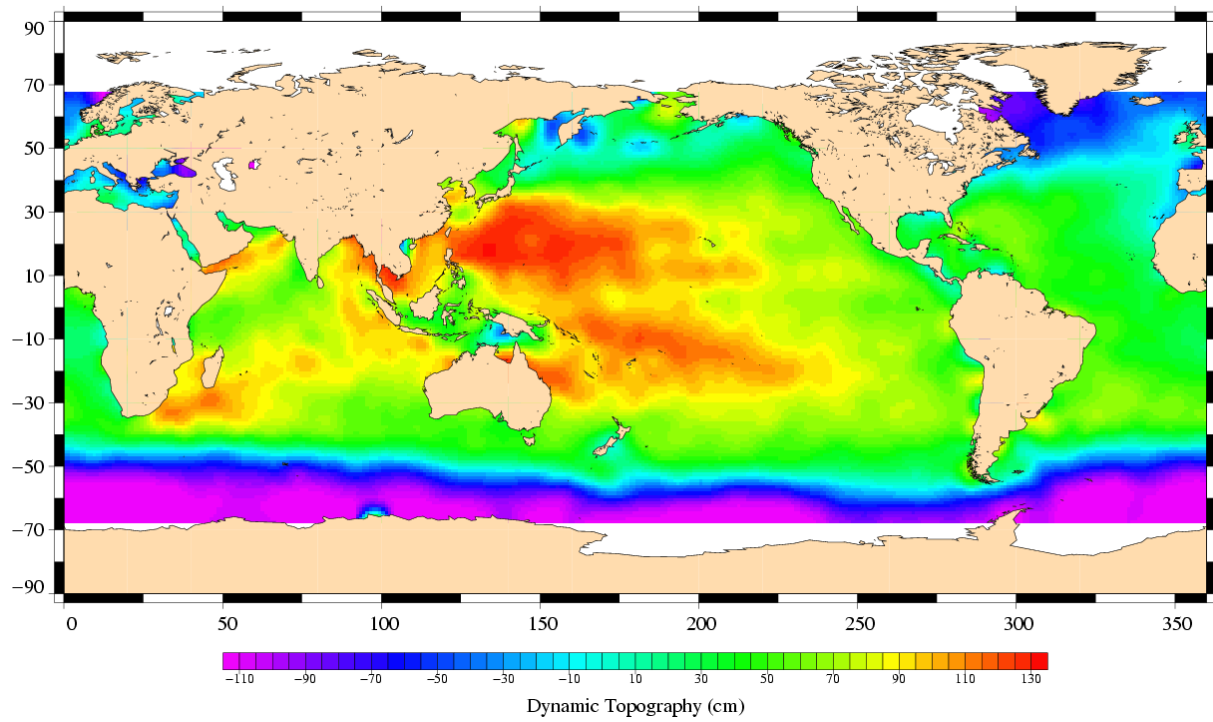


(SSH - MSS) differences greater than 0.3 m
TOPEX/Poseidon Cycle 429 (07/05/2004 / 16/05/2004)



3.9 Dynamic topography

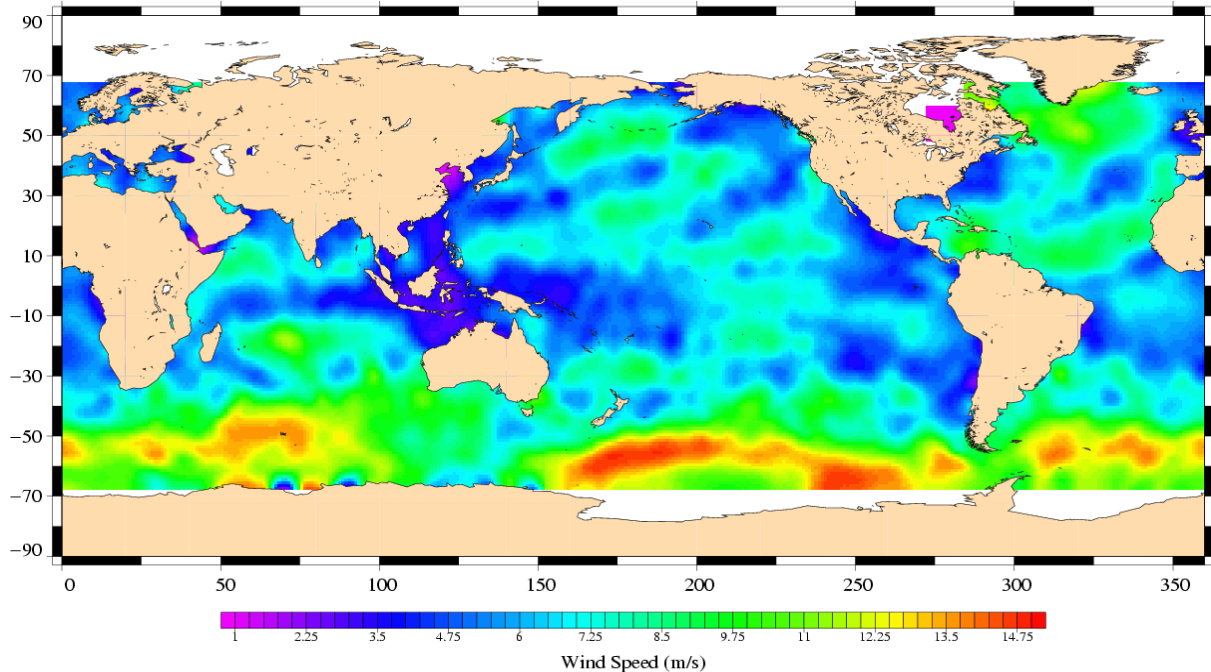
TOPEX/Poseidon, cycle 429
Period : 07/05/2004 – 16/05/2004



3.10 Wind and wave maps

These two figures show wind and wave estimations derived from 10 days of altimeter measurements.

TOPEX/Poseidon, cycle 429
Period : 07/05/2004 – 16/05/2004



TOPEX/Poseidon, cycle 429
Period : 07/05/2004 – 16/05/2004

