



TOPEX/Poseidon MGRD Quality Assessment Report

Cycle 450

01-12-2004 / 11-12-2004

Prepared by :	C. Schgounn, CLS G. Pontonnier, CLS M. Ablain, CLS	
Accepted by :	J. Dorandeu, CLS	
Quality visa :	M. Destouesse, CLS	
Approved by :	N. Picot, CNES	



SALP-RP-P2-EX-21120-CLS450

Edition 01.0, March 2005

1 Introduction. Document overview

The purpose of this document is to report the major features of the data quality from the Topex/Poseidon mission. The document is associated with data dissemination on a cycle by cycle basis.

The objectives of this document are :

- To provide a data quality assessment
- To provide users with necessary information for data processing
- To report any change likely to impact data quality at any level, from instrument status to software configuration
- To present the major useful results for the current cycle

It is divided into the following topics:

[Cycle overview](#)

[CALVAL main results](#)

2 Cycle overview

2.1 Cycle quality and performances

Data quality for this cycle is nominal.

For this cycle, the crossover standard deviation is 6.54 cm rms. When using a selection to remove shallow waters (1000 m), areas of high ocean variability and high latitudes ($> |50|$ deg.) it decreases down to 5.81 cm rms.

The standard deviation of Sea Level Anomalies (SLA) relative to a 7-year Mean Sea Surface is 21.61 cm. When using a selection to remove shallow waters (1000 m), areas of high ocean variability and high latitudes ($> |50|$ deg), it lowers to 9.63 cm .

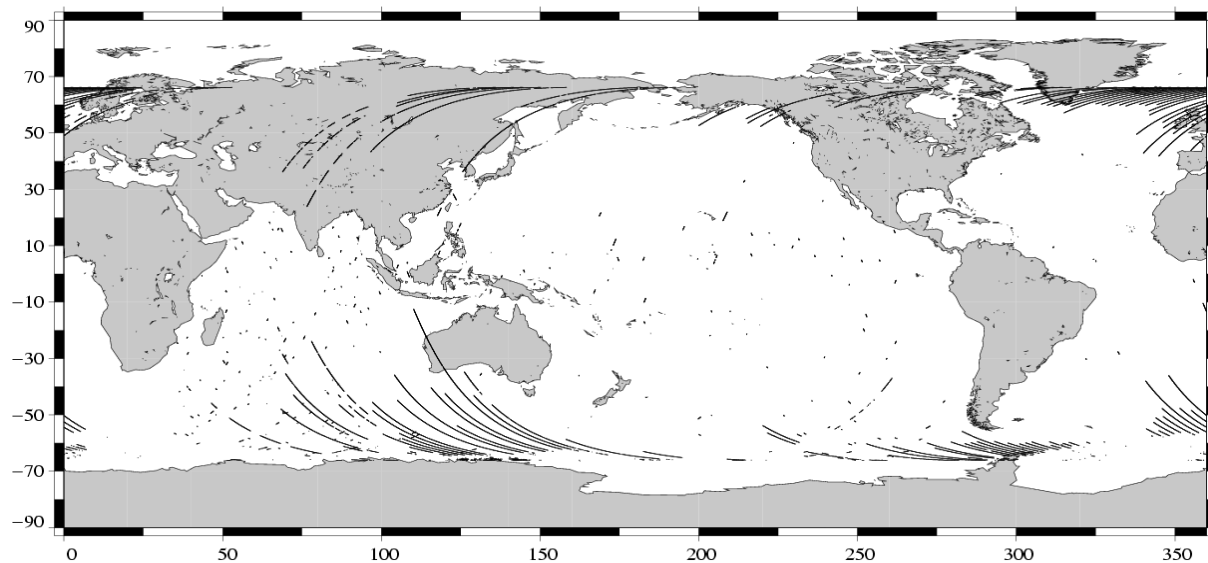
2.2 Missing measurements

Pass 98 and a large part of pass 97 are missing due to an Altimeter SEU on 05, December 2004.

2.3 Warnings and recommendations

- Missing measurements :
 - Since October 08th all mission data recovery requirements have been met via TDRSS real time contacts.
Therefore there is a lot of data gaps, especially in the Indian Ocean, between the East and Southeast Pacific basin, in the South Pacific Ocean close to the South and Central America coasts and below the Groenland coasts.
- Doris switch off :
The DORIS instrument was switched off since the incident on 01, November 2004. All the POE requirements are now met using lasernet tracking data. Only bent ionospheric correction is available.
- Measurements edited by the TMR parameters :
The following anomalies are explained by the problems in the interpolation of the TMR parameters due to tape recorder failures :
 - 6.20% of the measurements are removed by the TMR correction criterion (see the following figure).
 - Some measurements have radiometer earth flag set to valid over earth. A new criterion has been added to the editing procedure to remove all these measurements (see [Editing](#)) .

Edited parameter : Radiometer wet tropospheric correction
T/P Cycle 450 (01/12/2004 / 11/12/2004)



3 CALVAL main results

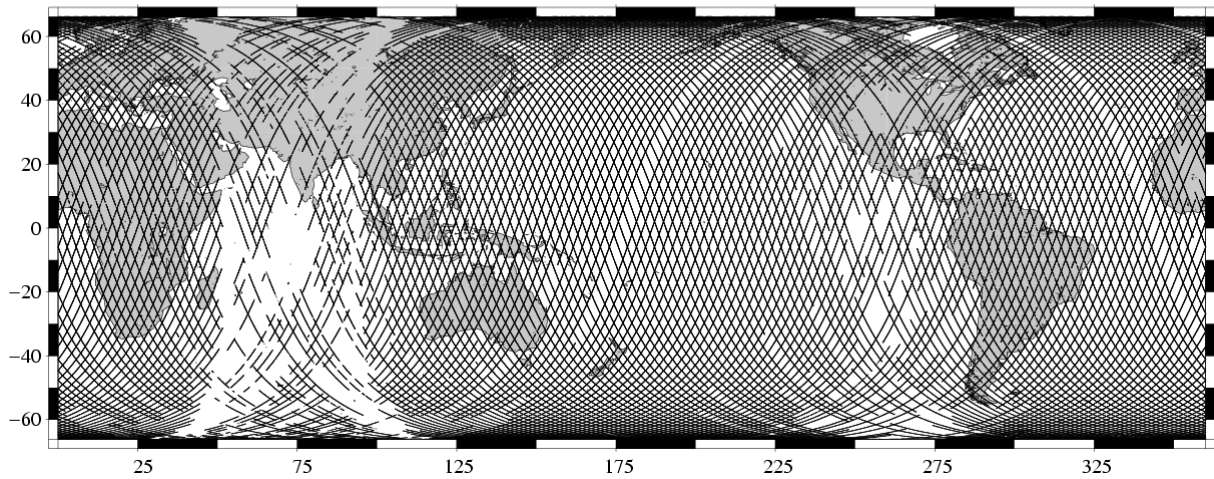
This section presents results that illustrate data quality during this cycle. These verification products are produced operationally so that they allow systematic monitoring of the main relevant parameters.

3.1 Missing measurements

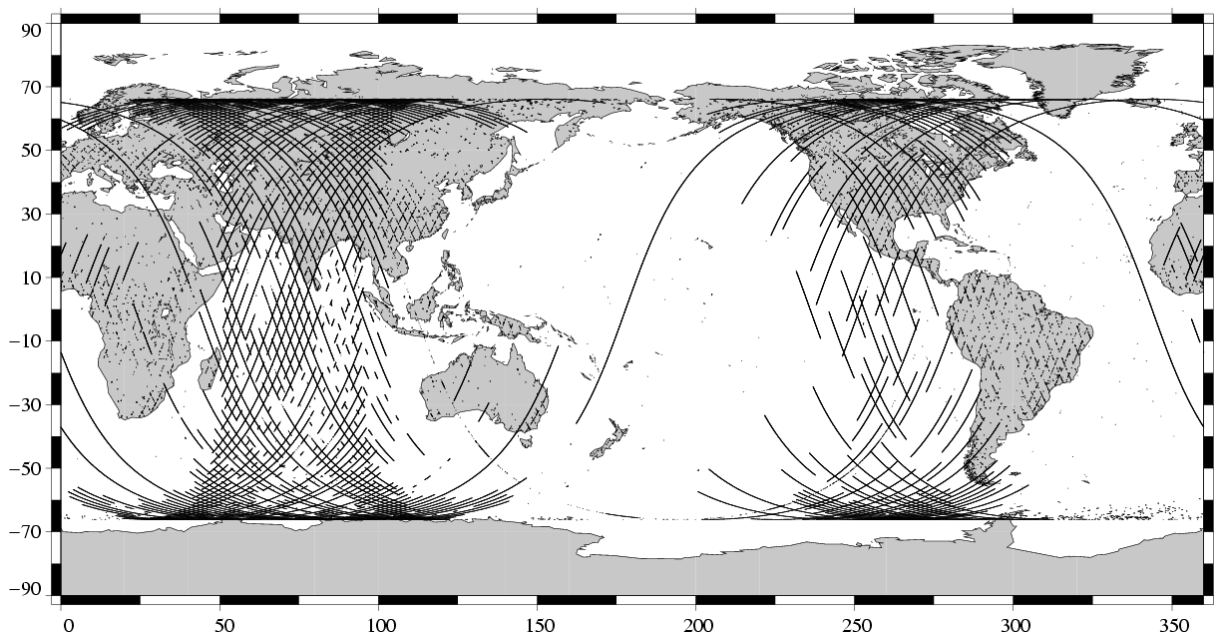
617537 altimeter measurements are present, and 177118 are missing.

The map below shows all the available measurements for this cycle and illustrates the tape recorder problems. The latter figure shows missing 1Hz measurements in the GDRs, with respect to a 1 Hz sampling of a nominal repeat track.

Available measurements
TOPEX Cycle 450 (01/12/2004 / 11/12/2004)



Missing measurements
TOPEX/Poseidon Cycle 450 (01/12/2004 / 11/12/2004)



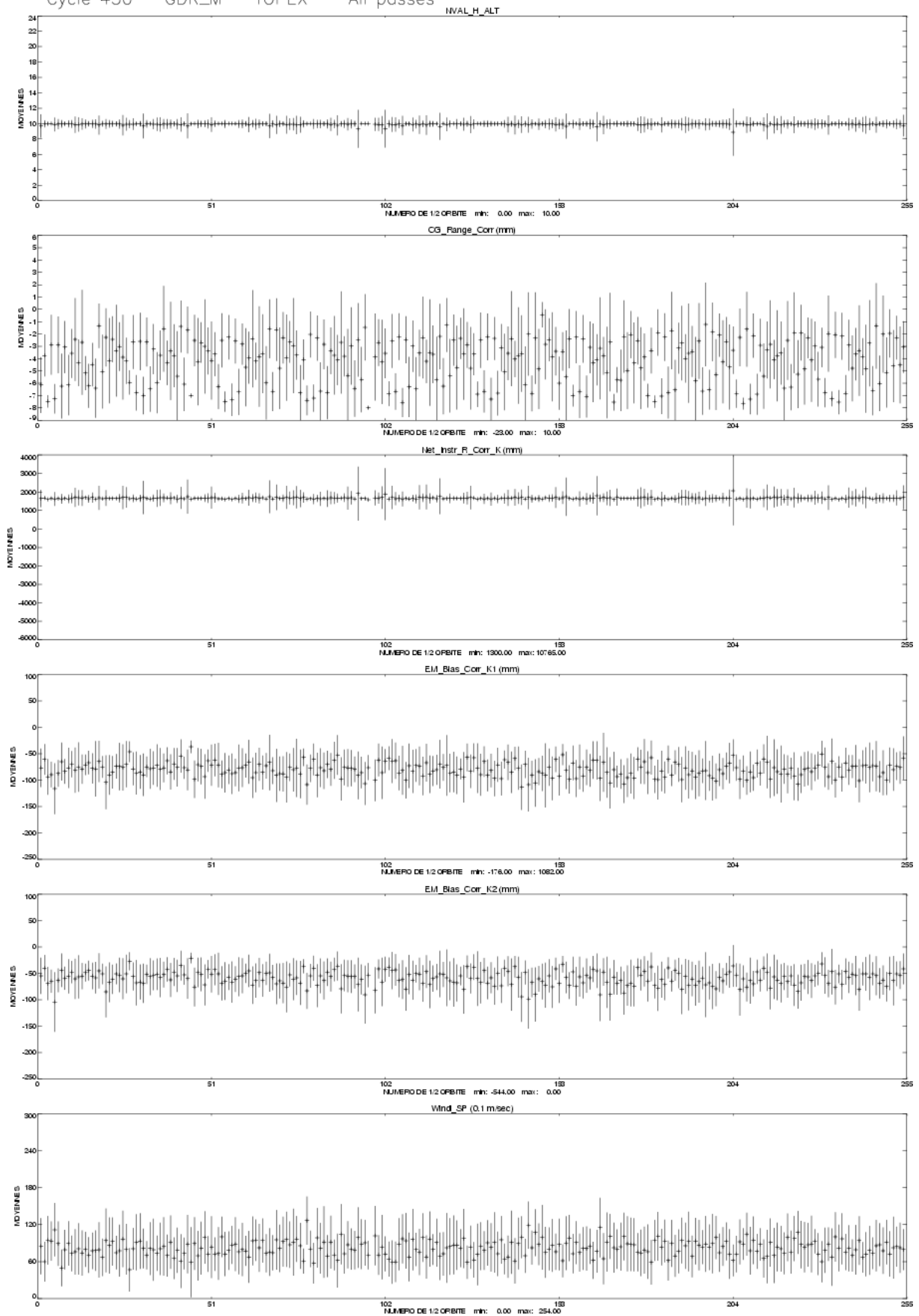
3.2 M-GDR quality flags

The following table indicates the percentage of measurements for which those flags are set.

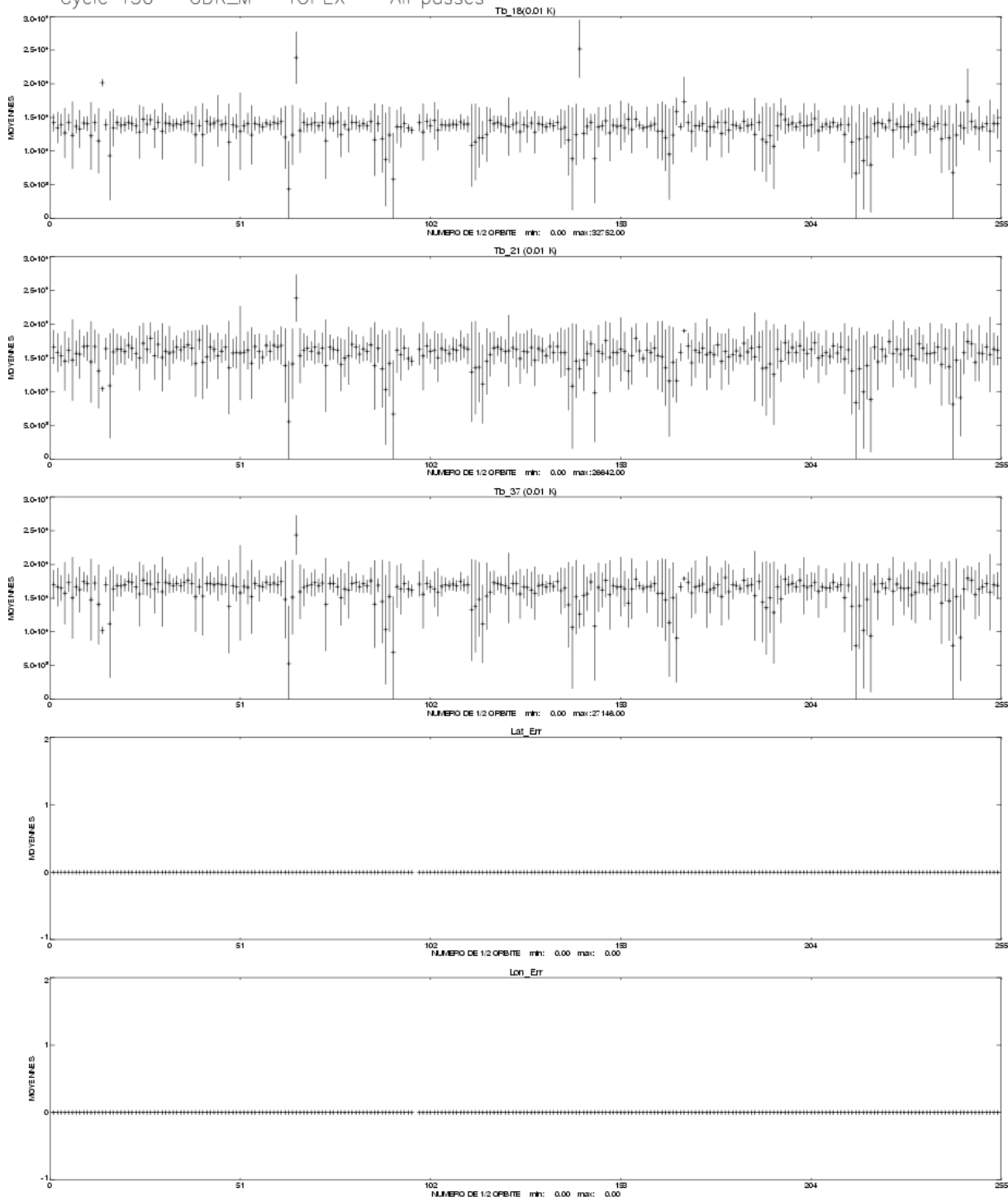
Name	Description	% bad
Geo_Bad_1	altimeter land flag	25.71
Geo_Bad_1	ice flag	6.57
Geo_Bad_1	radiometer land flag	27.49
Alt_Bad_1	conditions 1 altimeter	4.42
Alt_Bad_2	conditions 2 altimeter	4.25
Geo_Bad_2	rain (liquid water in excess)	10.26
Geo_Bad_2	less than 4 points for CSR3.0 tide calculation	0.40
Geo_Bad_2	less than 4 points for FES95.2.1 tide calculation	2.81
TOPEX	TOPEX not valid	0.00
TMR	TMR not valid	0.00
TMR_Bad	Brightness temperatures not valid	11.68
DORIS	DORIS not valid	0.00

3.3 M-GDR parameter plots

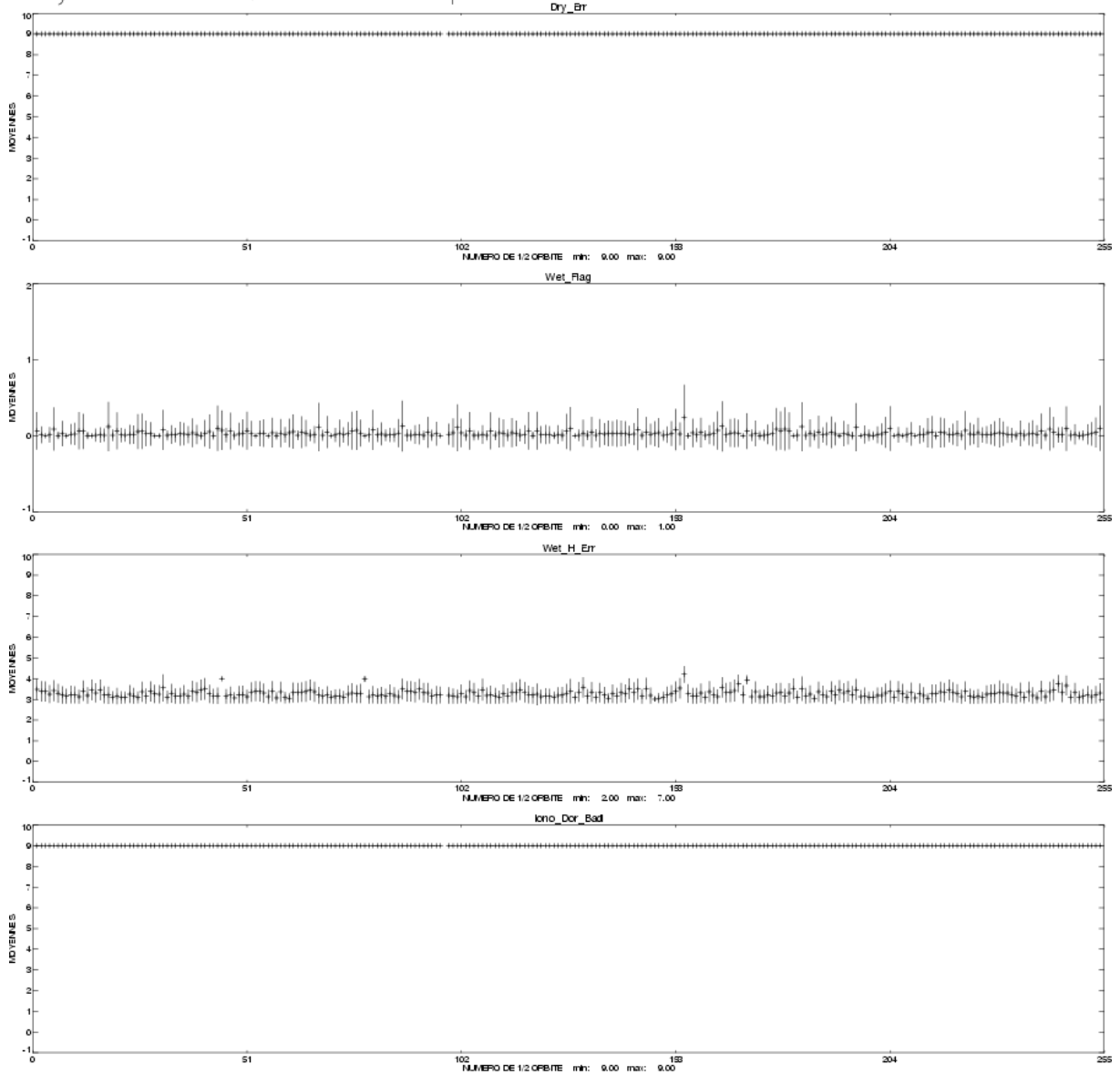
Cycle 450 – GDR_M – TOPEX – All passes –



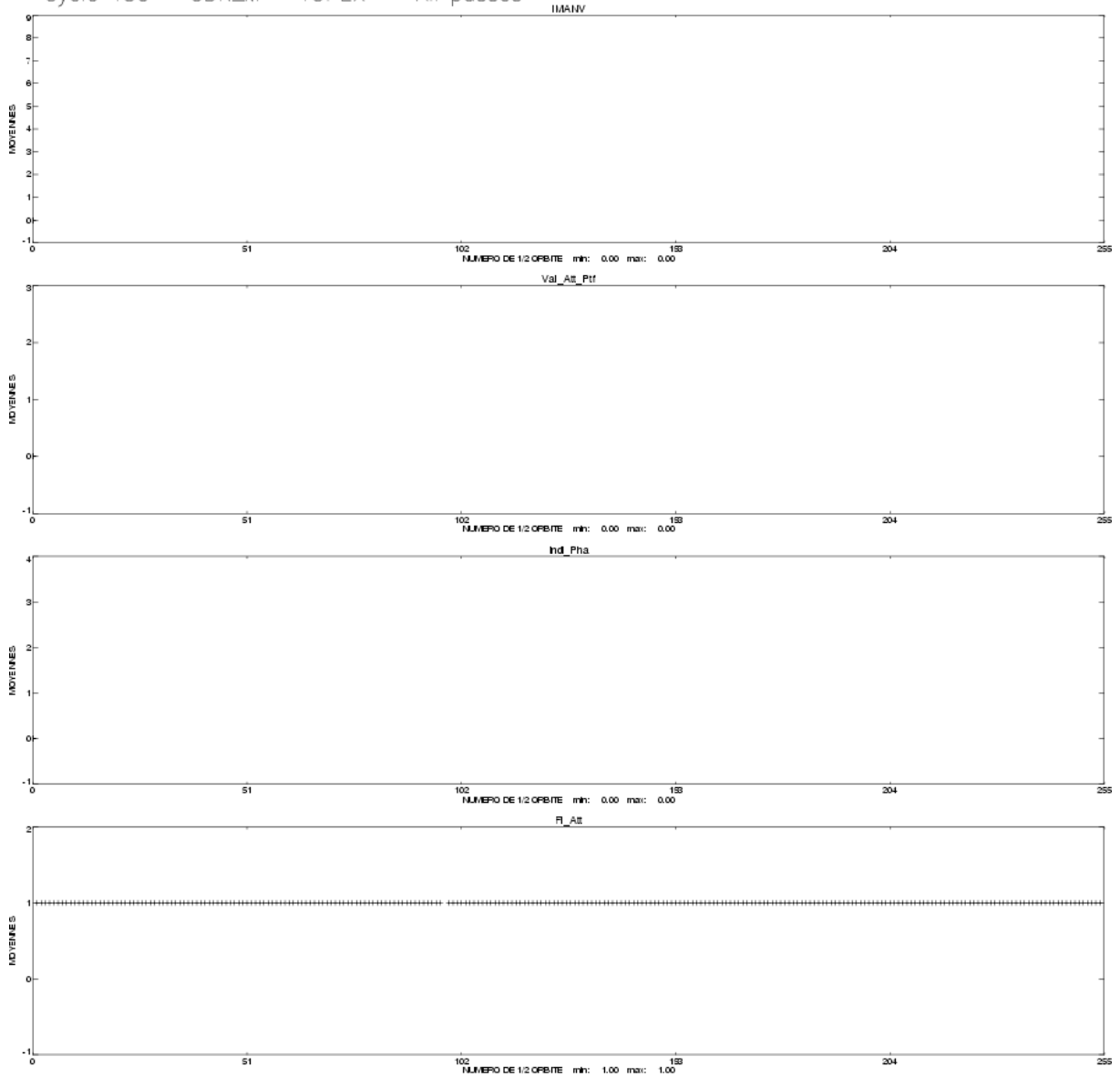
Cycle 450 – GDR_M – TOPEX – All passes –

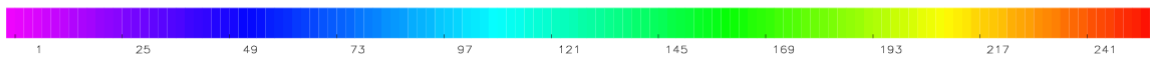
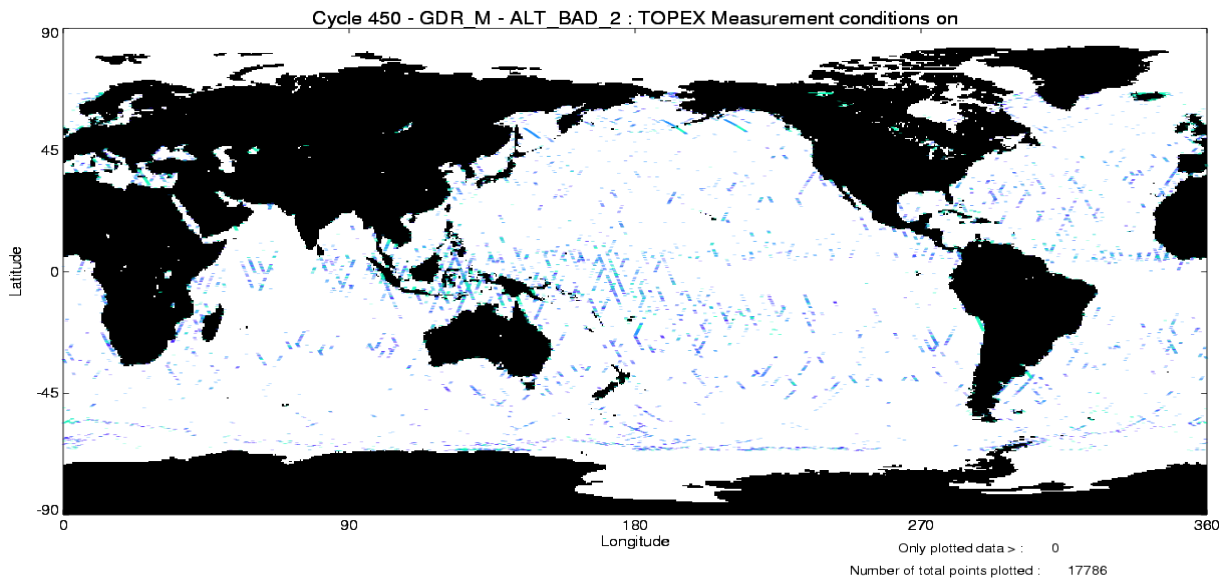
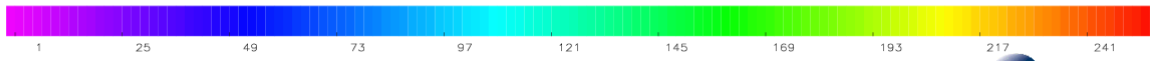
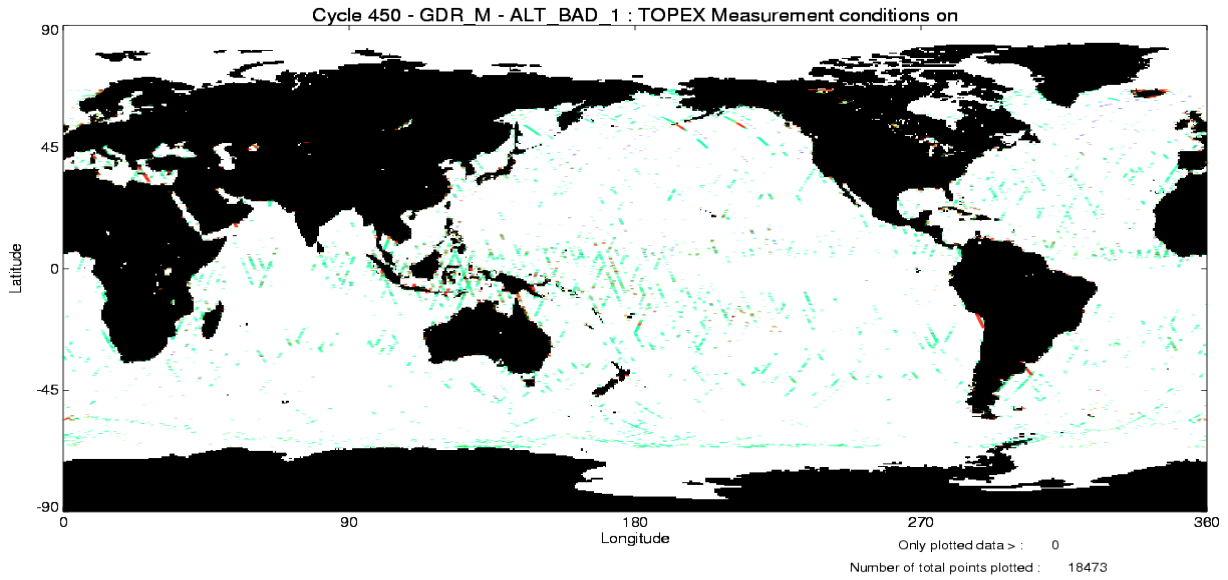


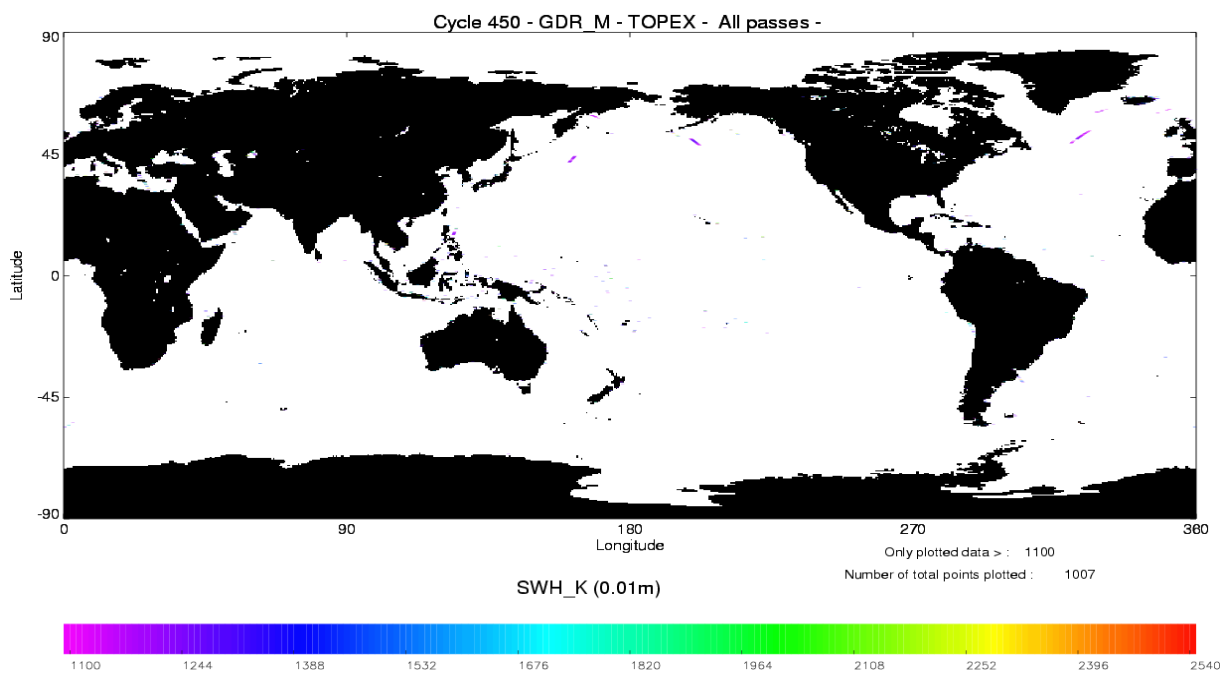
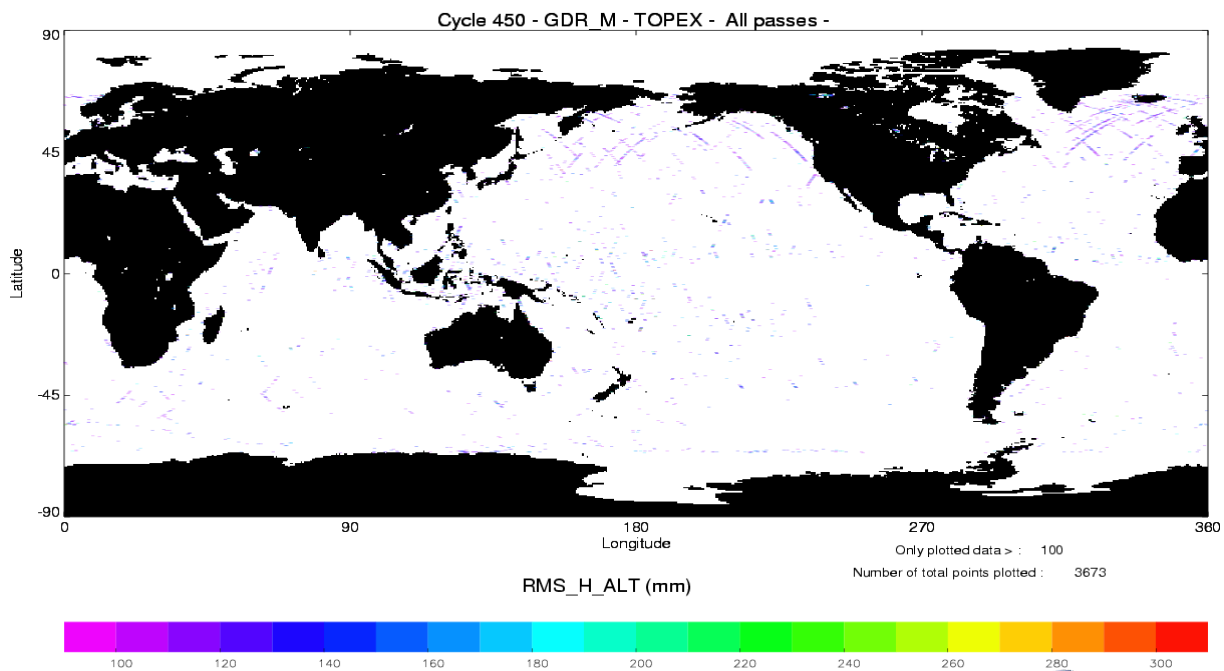
Cycle 450 – GDR_M – TOPEX – All passes –

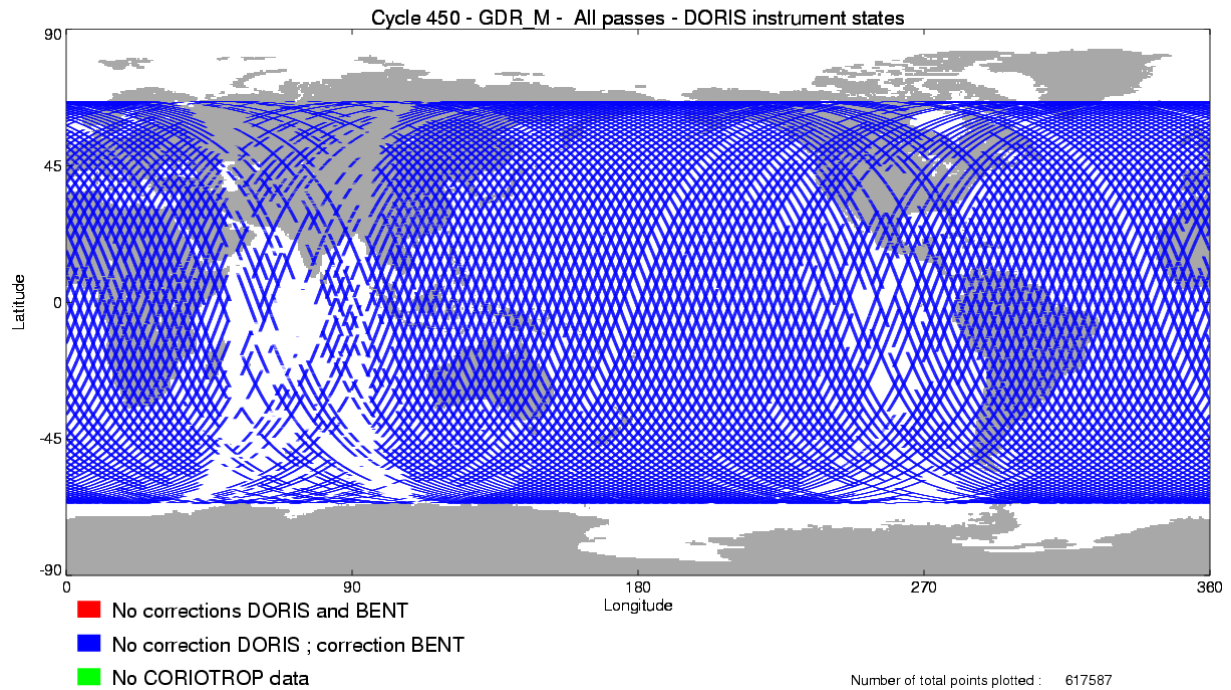


Cycle 450 – GDR_M – TOPEX – All passes –









3.4 Editing

The following table gives for each tested parameter, minimum and maximum thresholds, the number and the percentage of points removed. As a comparison, the mean percentage over one year (1997) is also given.

There are problems in the interpolation of the TMR parameters since cycle 371 when there are missing measurements (tape recorder failures). These bad measurements are removed by the TMR correction criterion but some of them have been kept. Thus a new criterion has been added to the editing procedure since the cycle 376 to remove all the measurements where the absolute value of the difference between the TMR correction and the ECMWF model wet tropospheric correction is greater than 20 cm.

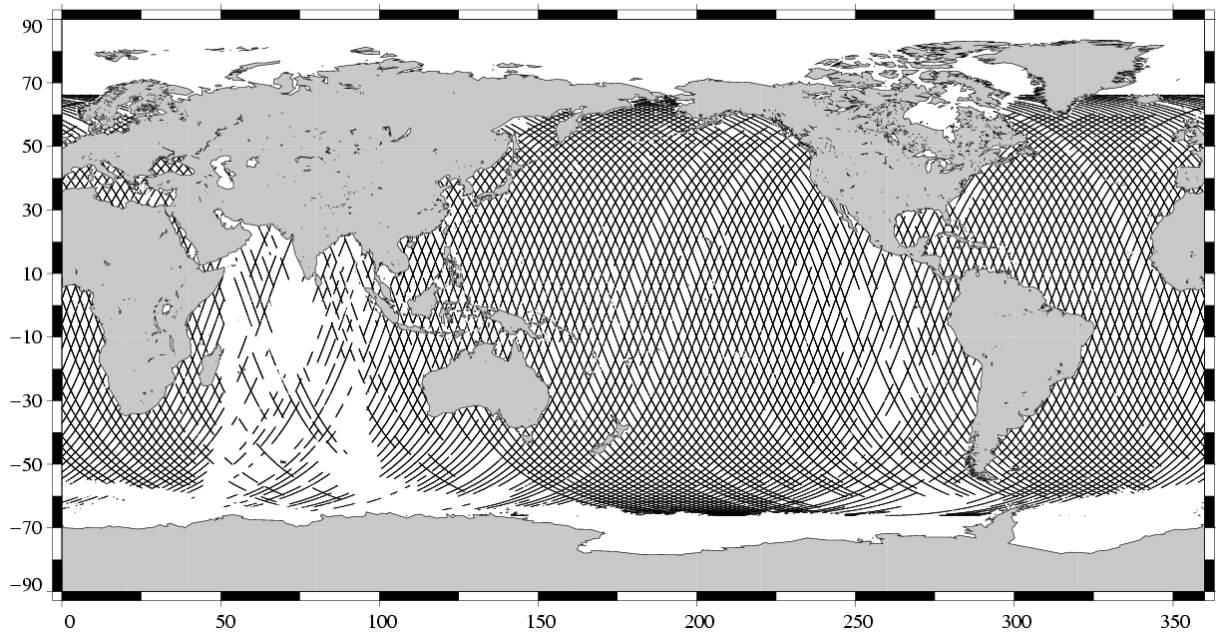
Probably due to the interpolation problem with the TMR, some measurements have radiometer land flag unset over land. This has no impact on the valid data because these measurements have been edited by the altimetric parameter criteria. Nevertheless, this anomaly leads to wrong statistics of the edited measurements. Therefore a new criterion has been added in the editing procedure to remove all the measurements for which the radiometer land flag is set to ocean and the altimeter land flag is set to land.

The number and percentage of points removed by each criterion is given on the following table. Note that these statistics are obtained with measurements already edited for radiometer land flag (27.49 % of points removed) and ice flag (6.57 % of points removed).

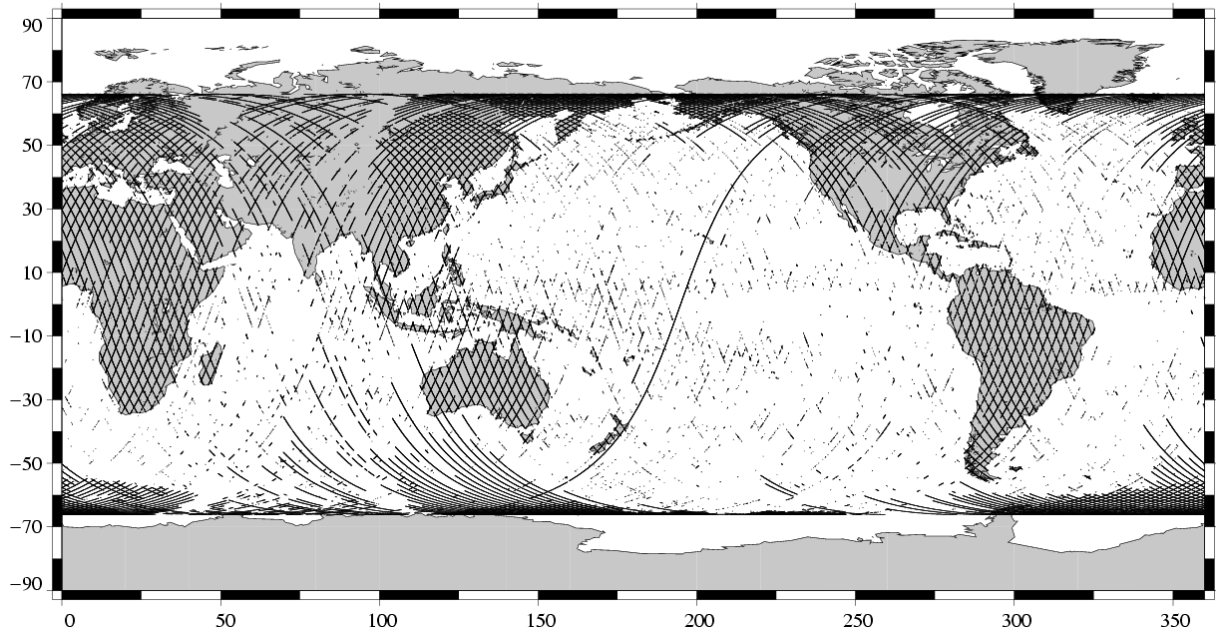
Parameters	Min Thres.	Max Thres.	Unit	Mean % removed in 1997	% removed
Sea surface height	-130.000	100.000	m	1.37	0.20
Number of 20/10Hz valid points Poseidon/TOPEX	5.000	-		1.37	0.31
Std. deviation of range	0.000	0.100	m	1.85	1.01
Off nadir angle from waveform	0.000	0.400	deg	1.36	3.22
Dry tropospheric correction	-2.500	-1.900	m	0.00	0.00
Invert barometer correction	-2.000	2.000	m	0.00	0.00
TMR wet tropospheric correction	-0.500	-0.001	m	0.34	6.20
Ionospheric correction (Poseidon:Doris, TOPEX: Dual)	-0.400	0.040	m	0.00	0.34
Significant wave height	0.000	11.000	m	1.46	0.15
Sea state Bias	-0.500	0.000	m	1.39	0.32
Backscatter coefficient	7.000	30.000	dB	1.44	0.36
Ocean tide height	-5.000	5.000	m	0.01	0.16
Earth tide	-1.000	1.000	m	0.00	0.00
Pole tide	-15.000	15.000	m	0.00	0.00
TMR and ECMWF tropospheric differences	-0.200	0.200	m	NaN	0.44
Spline fitting					0.01

The following three maps are complementary: they show respectively the removed, the selected measurements and the percentage of selected measurements in the editing procedure.

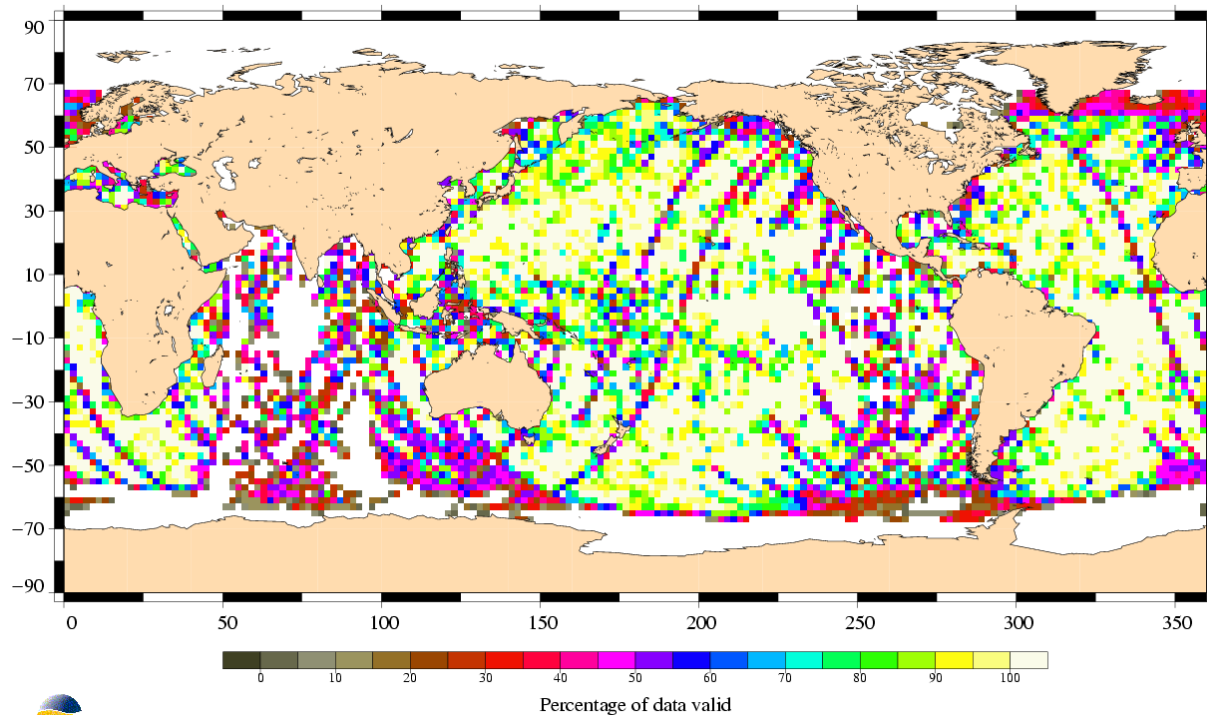
Valid data
TOPEX/Poseidon Cycle 450 (01/12/2004 / 11/12/2004)



Edited measurements
TOPEX Cycle 450 (01/12/2004 / 11/12/2004)

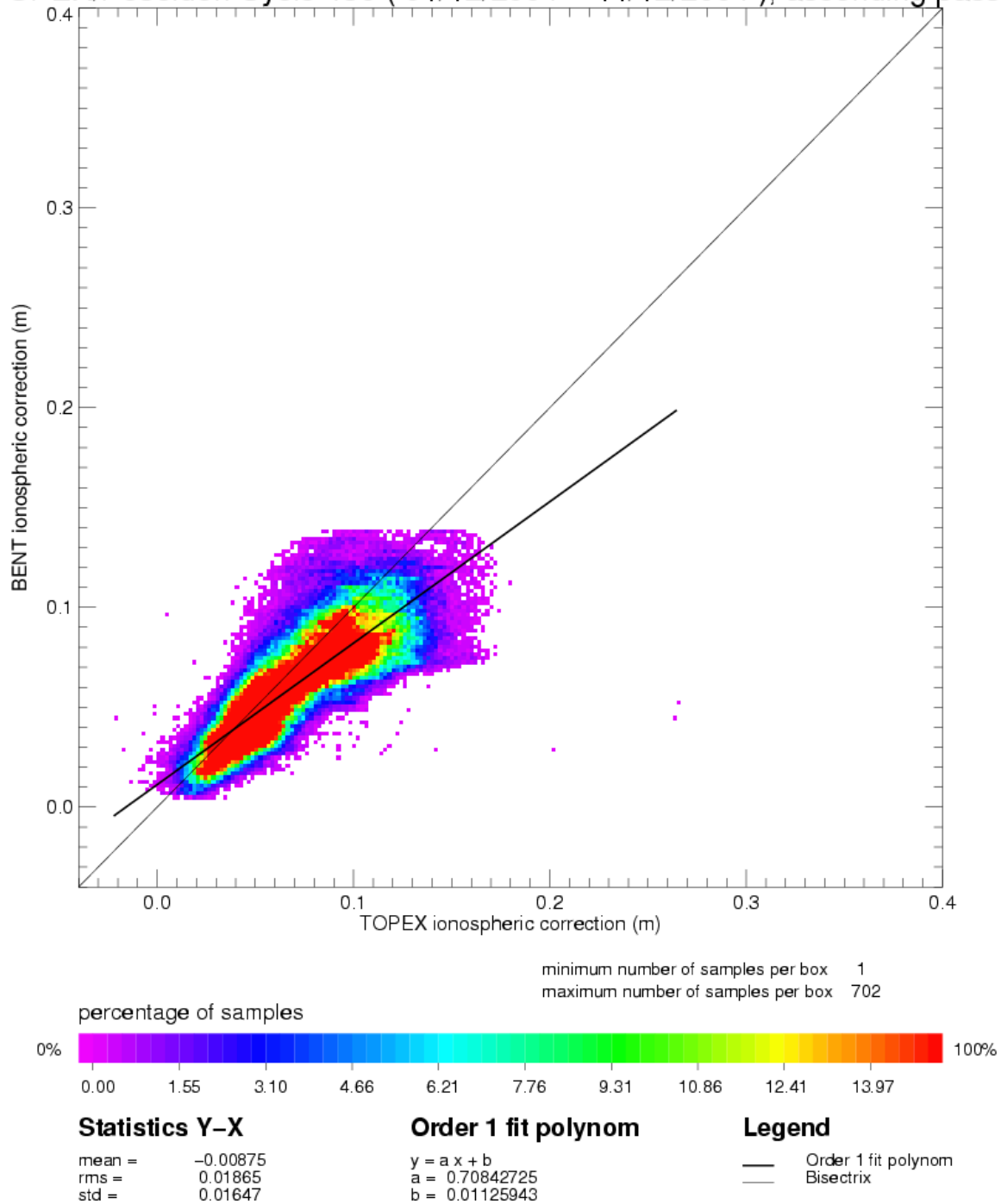


Percentage of valid data relative to the nominal pass
TOPEX/Poseidon Cycle 450 (01/12/2004 / 11/12/2004)

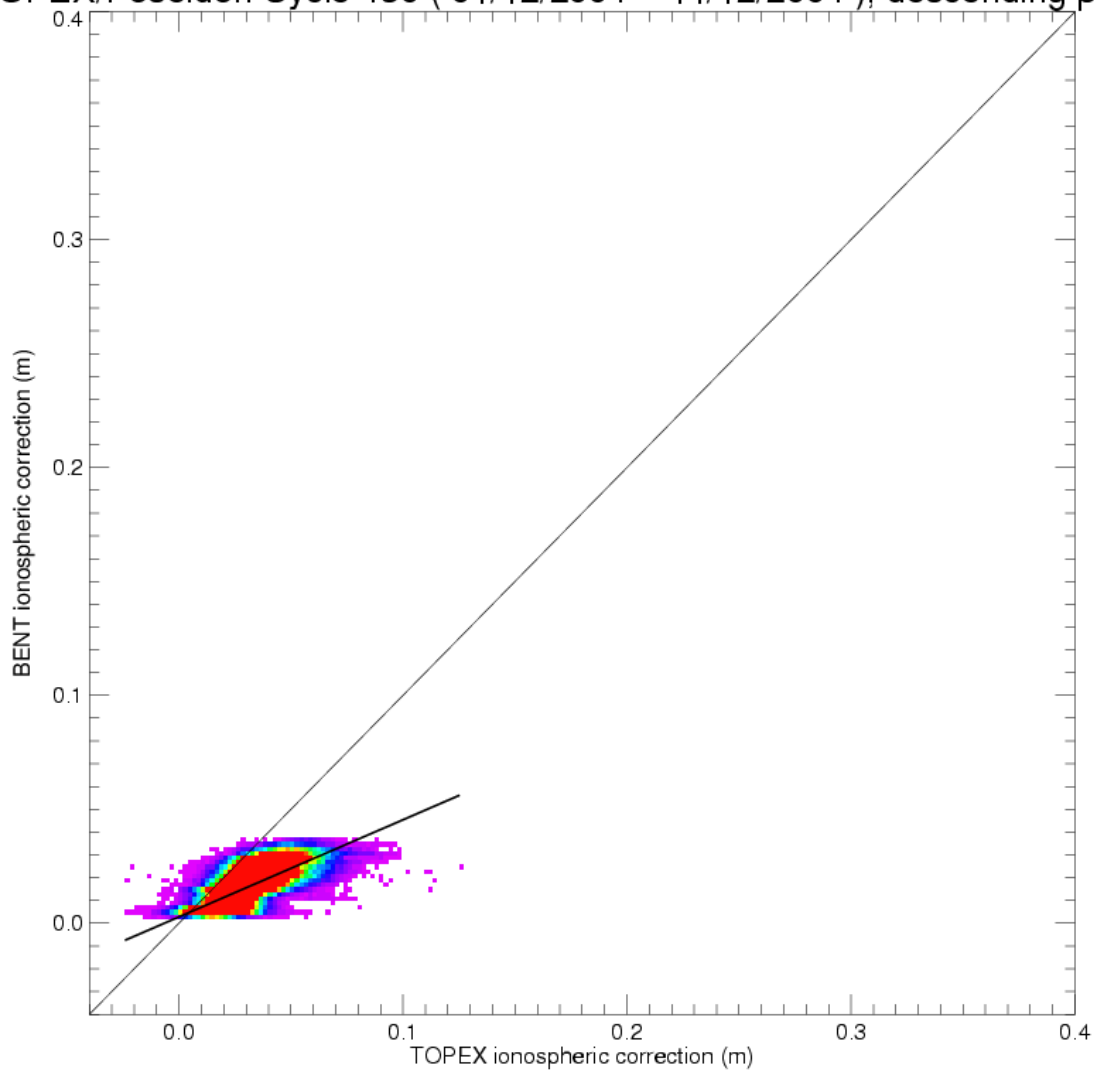


3.5 Ionospheric correction

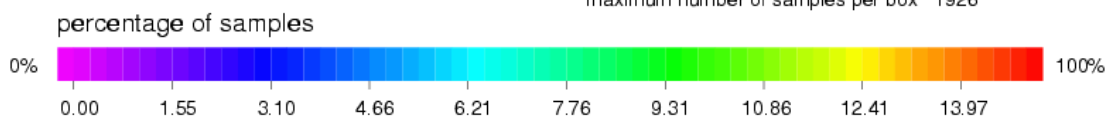
TOPEX/Poseidon Cycle 450 (01/12/2004 – 11/12/2004), ascending passes



TOPEX/Poseidon Cycle 450 (01/12/2004 – 11/12/2004), descending passes



minimum number of samples per box 1
 maximum number of samples per box 1926



Statistics Y-X

mean = -0.01462
 rms = 0.01769
 std = 0.00996

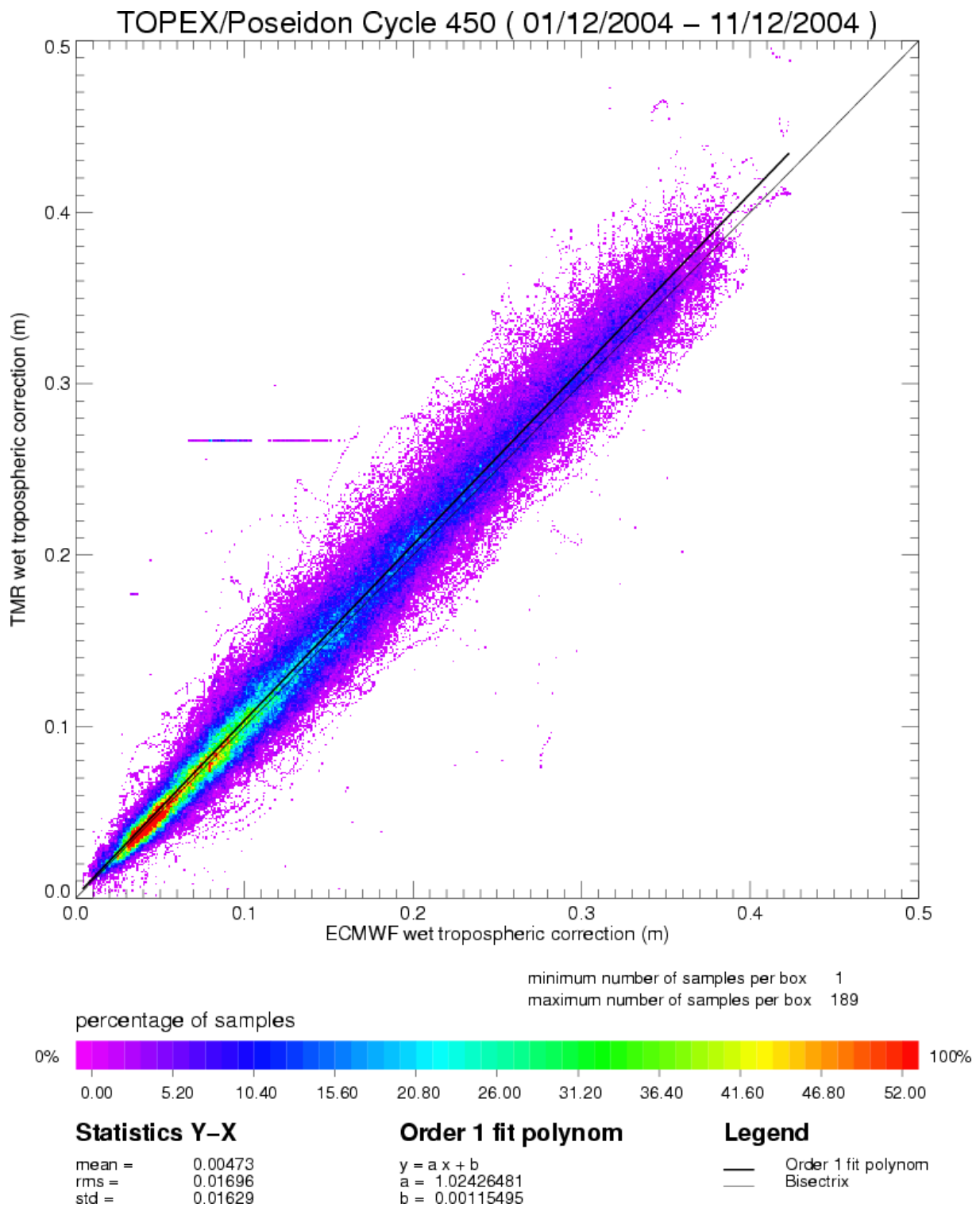
Order 1 fit polynom

$y = a x + b$
 $a = 0.42620388$
 $b = 0.00278086$

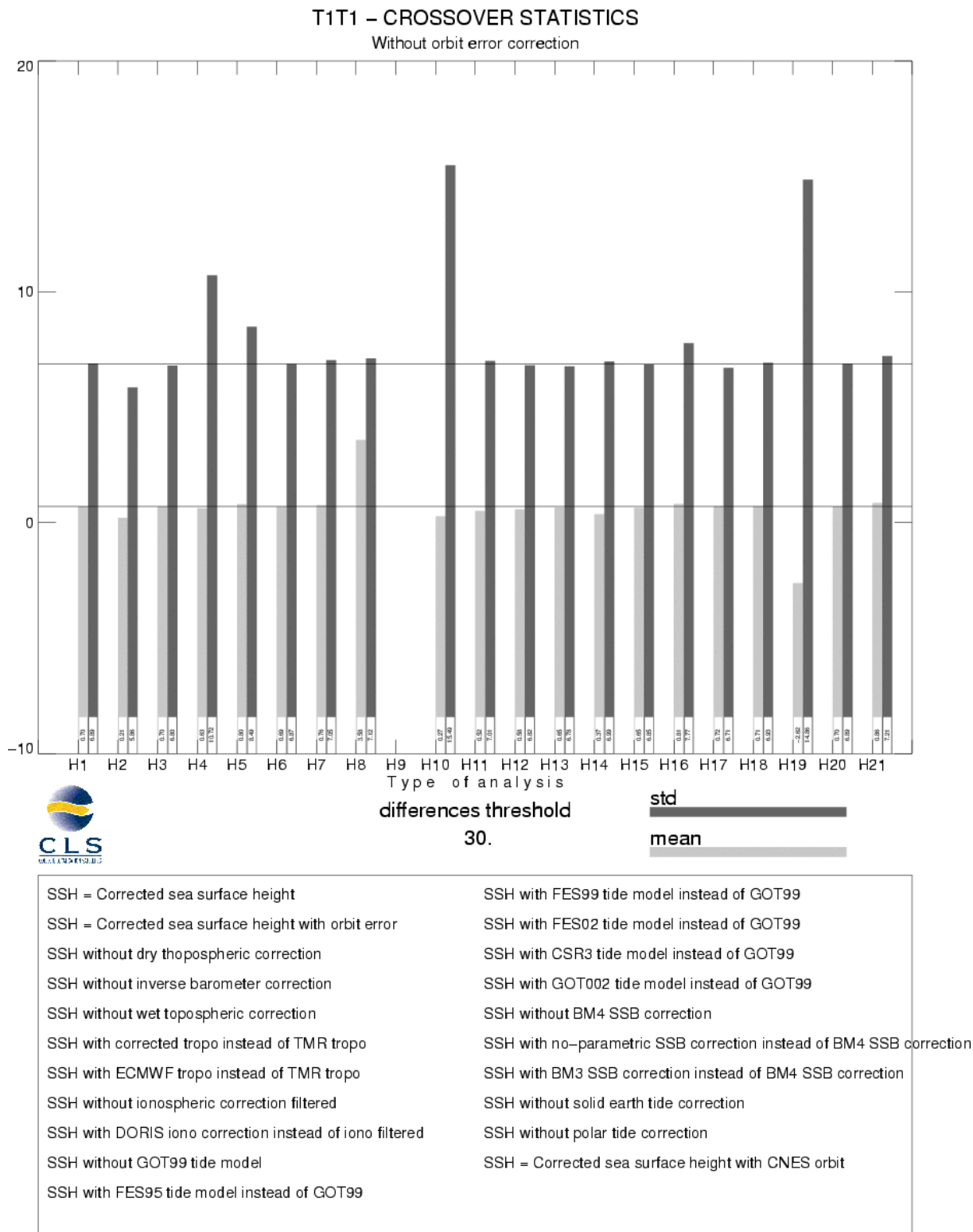
Legend

— Order 1 fit polynom
 — Bisectrix

3.6 Wet tropospheric correction



3.7 Crossover statistics



T1T1 – CROSSOVER STATISTICS

Without orbit error correction

SSH = Corrected sea surface height

RAPPEL DES SELECTIONS

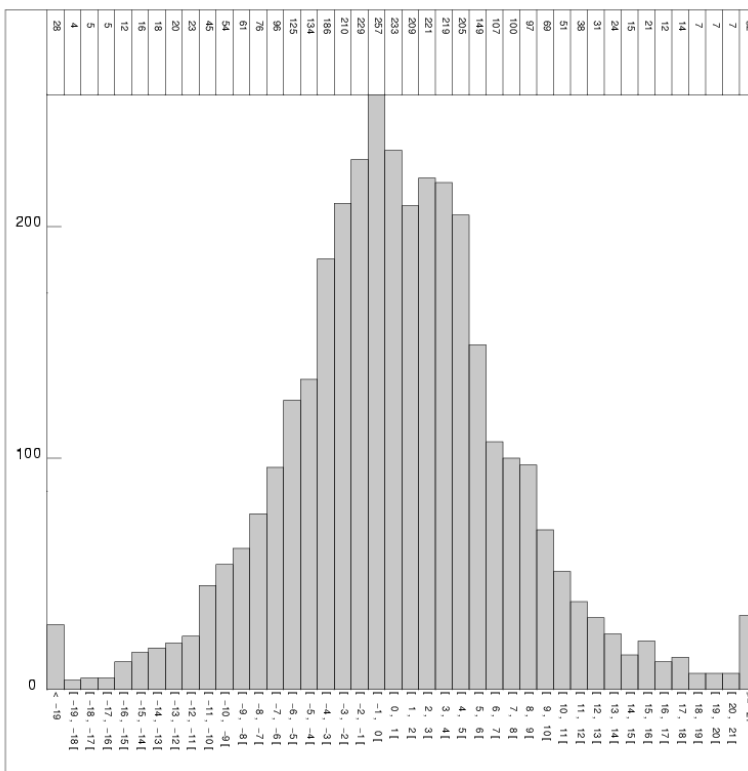
Type de points de croisement: T1T1
 Zone géographique (deg): -90 / 90 , 0 / 360
 Seuil sur les écarts d'analyse DV (moy) 30.00 (seuil)
 Selection(s) sur les champs :
 CL Arc 1 :=INTERP_SPLN
 CL Arc 2 :=INTERP_SPLN
 Seuil Min +: 0.0000000
 Seuil Max : 0.0000000

Selection(s) sur les écarts :
 Aucune

RESULTATS STATISTIQUES

Valeur minimale : -29.6100
 Valeur maximale : 29.9500
 Différence Max – Min: 59.5600
 Nombre de points lus: 3565
 Nombre de points sélectionnés: 3468
 Moyenne : 0.702875
 Écart-type : 6.89271
 Moyenne Quadratique : 6.92846

CLS Space Oceanography Division



T1T1 – CROSSOVER STATISTICS

With orbit error correction

SSH = Corrected sea surface height

RAPPEL DES SELECTIONS

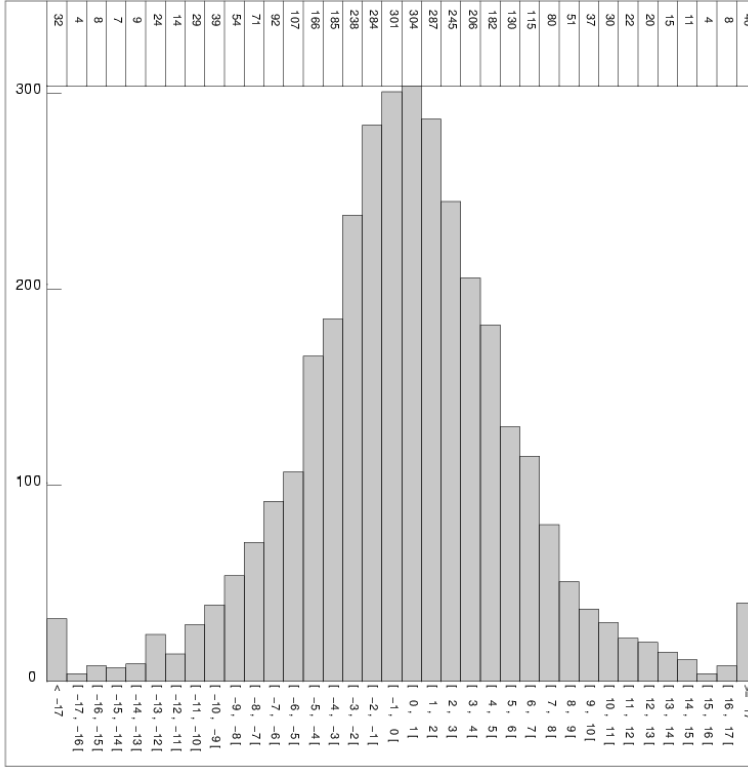
Type de points de croisement: T1T1
 Zone géographique (deg): -90 / 90 , 0 / 360
 Seuil sur les écarts d'analyse DV (moy) 30.00 (seuil)
 Selection(s) sur les champs :
 CL Arc 1 :=INTERP_SPLN
 CL Arc 2 :=INTERP_SPLN
 Seuil Min +: 0.0000000
 Seuil Max : 0.0000000

Selection(s) sur les écarts :
 Aucune

RESULTATS STATISTIQUES

Valeur minimale : -28.0500
 Valeur maximale : 29.5200
 Différence Max – Min: 57.5700
 Nombre de points lus: 3565
 Nombre de points sélectionnés: 3444
 Moyenne : 0.209535
 Écart-type : 5.86233
 Moyenne Quadratique : 5.86607

CLS Space Oceanography Division



T1T1 – CROSSOVER STATISTICS
SSH, BATHY < -1000 m, VAR_OCE < 20 cm, LAT [-50°, +50]
SSH = Corrected sea surface height before orbit error

RAPPEL DES SELECTIONS

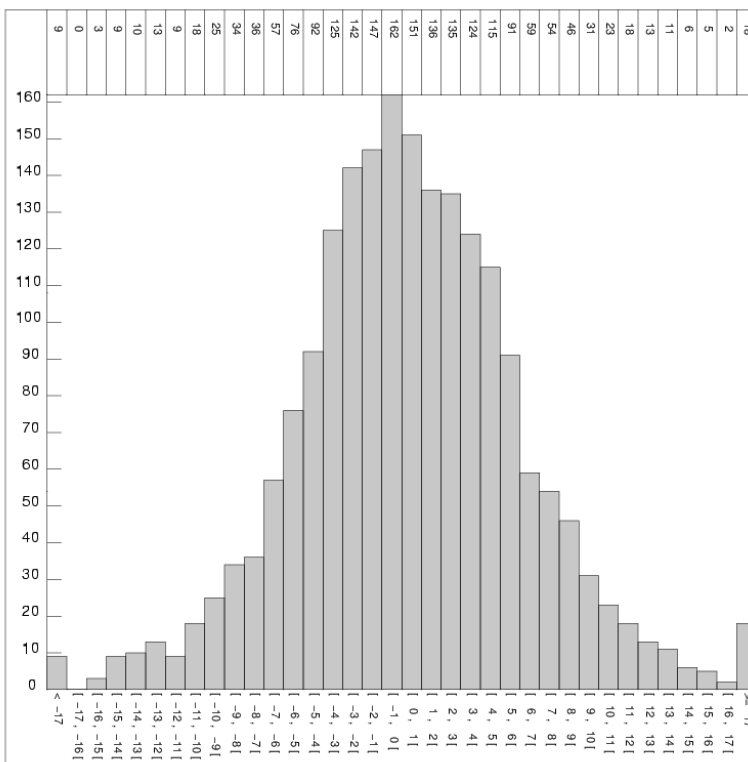
Type de points de croisement: T1T1
 Zone géographique (deg): -50 / 50 , 0 / 360
 Seuil sur les écarts d'analyse : aucun
 Selection(s) sur les champs :
 CL Arc 1 : =BATHY
 CL Arc 2 : =BATHY
 Seuil Min : aucun
 Seuil Max : -100000.00
 CL Arc 1 : =VAR_OCE
 CL Arc 2 : =VAR_OCE
 Seuil Min : aucun
 Seuil Max : 20.000000
 [...]

 Selection(s) sur les écarts :
 Aucune

RESULTATS STATISTIQUES

Valeur minimale : -27.0400
 Valeur maximale : 25.3300
 Différence Max – Min: 52.3700
 Nombre de points lus: 2678
 Nombre de points sélectionnés: 2005
 Moyenne : 0.394150
 Écart-type : 5.81136
 Moyenne Quadratique : 5.82471

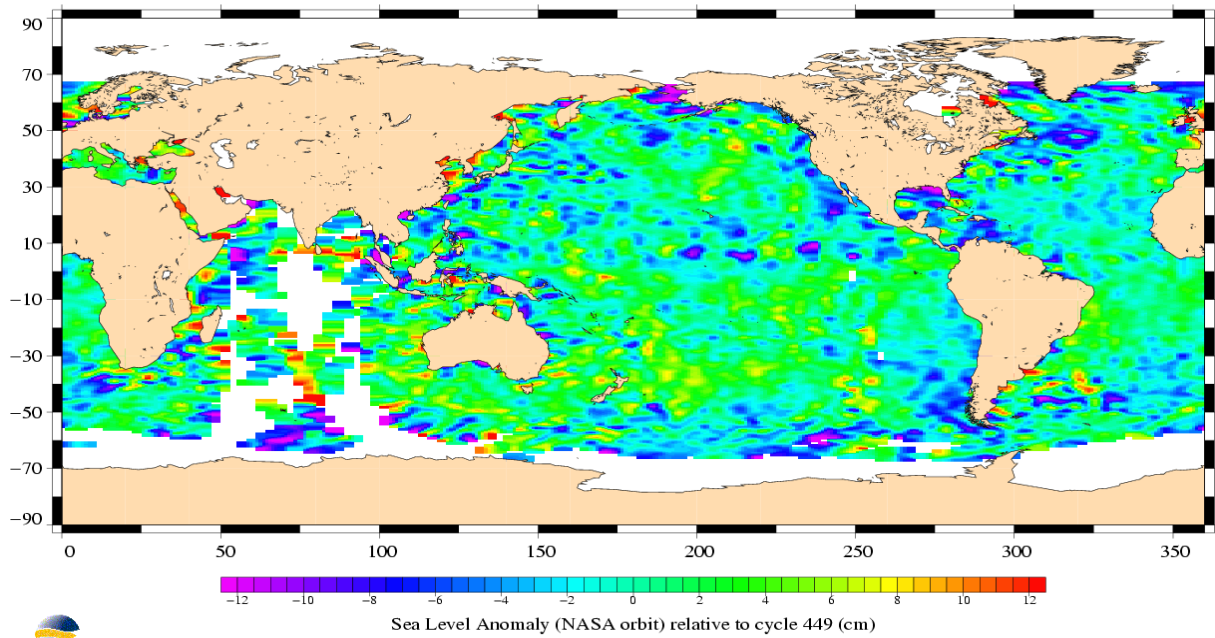
CLS Space Oceanography Division



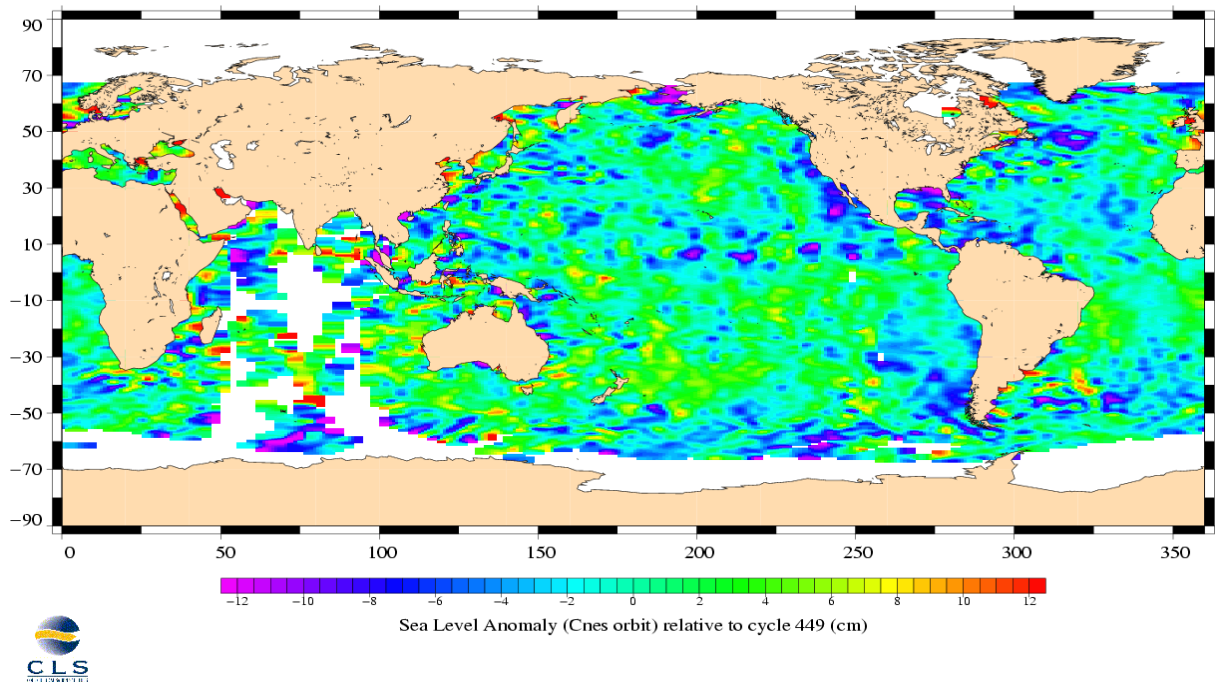
3.8 SSH variability

3.8.1 Sea Level Anomaly

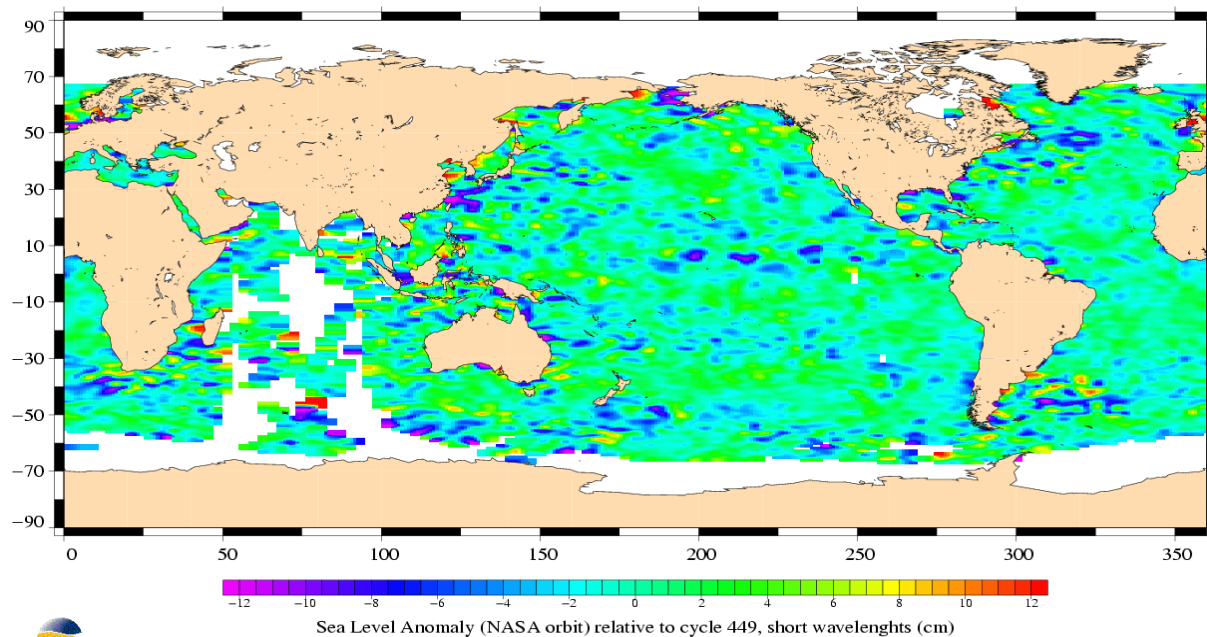
TOPEX/Poseidon, cycle 450
Period : 01/12/2004 – 11/12/2004



TOPEX/Poseidon, cycle 450
Period : 01/12/2004 – 11/12/2004



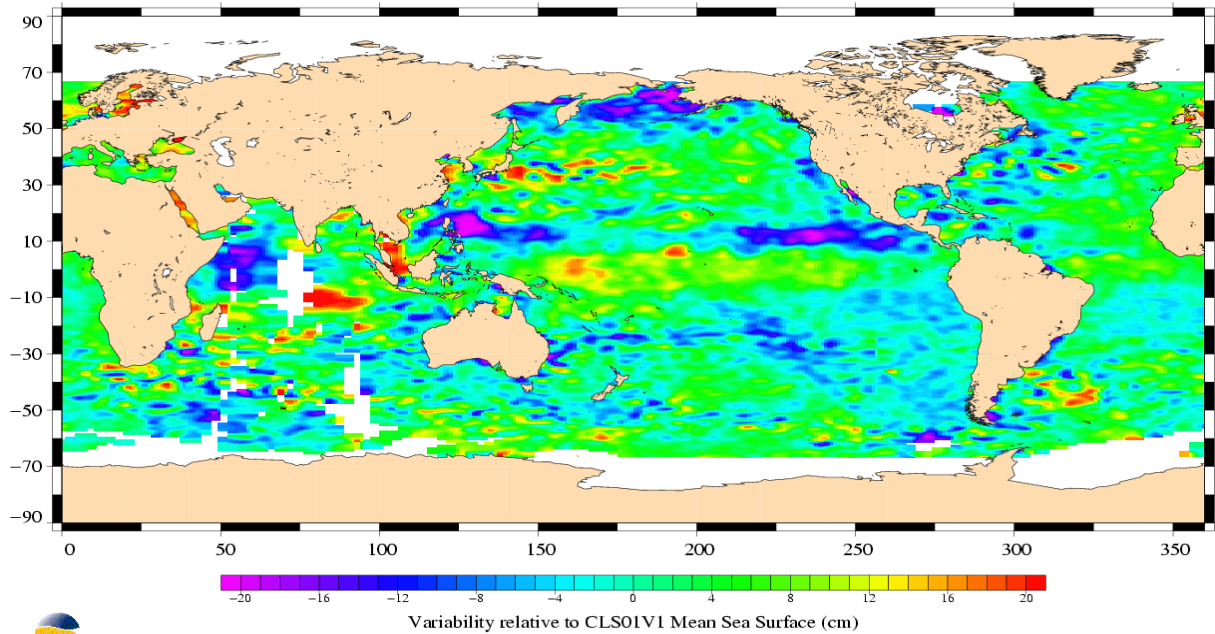
TOPEX/Poseidon, cycle 450
Period : 01/12/2004 – 11/12/2004



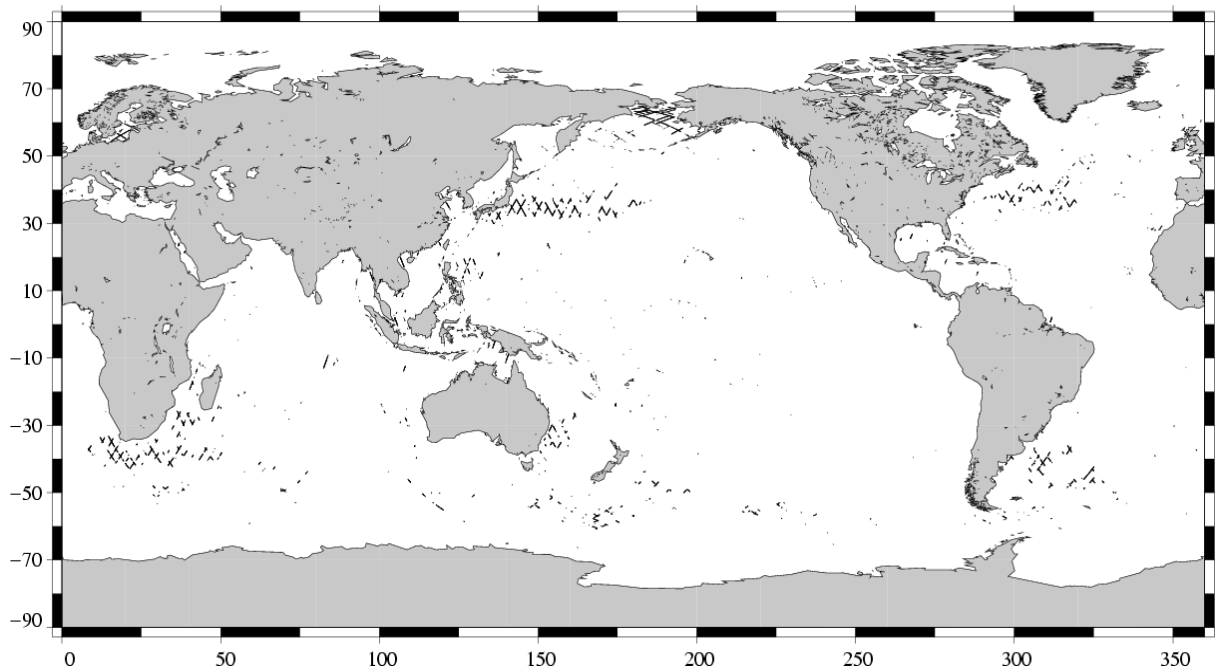
3.8.2 Comparison to a precise Mean Sea Surface

The CLS (2001) MSS model is used as a reference to compute SLA. The two following maps respectively show the map of Topex SLA relative to the MSS and differences higher than a 30 cm threshold (after centering the data). The latter figure shows that higher differences are located in high ocean variability areas, as expected.

TOPEX/Poseidon, cycle 450
Period : 01/12/2004 – 11/12/2004

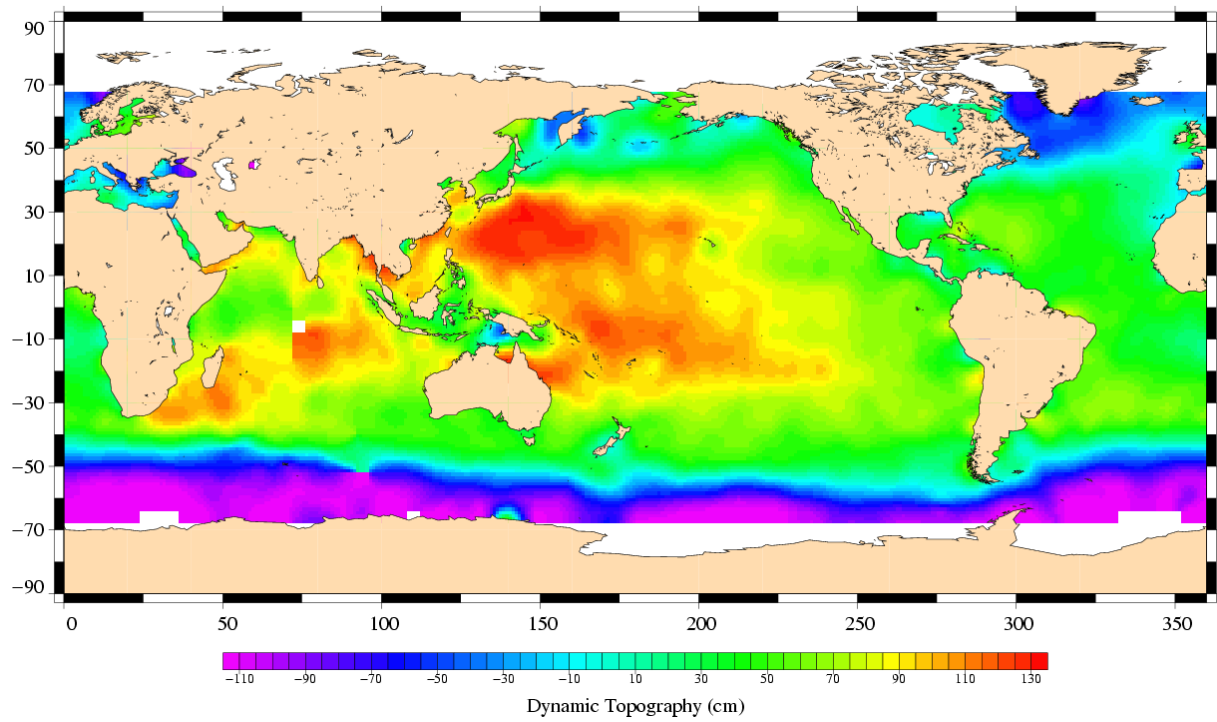


(SSH – MSS) differences greater than 0.3 m
TOPEX/Poseidon Cycle 450 (01/12/2004 / 11/12/2004)



3.9 Dynamic topography

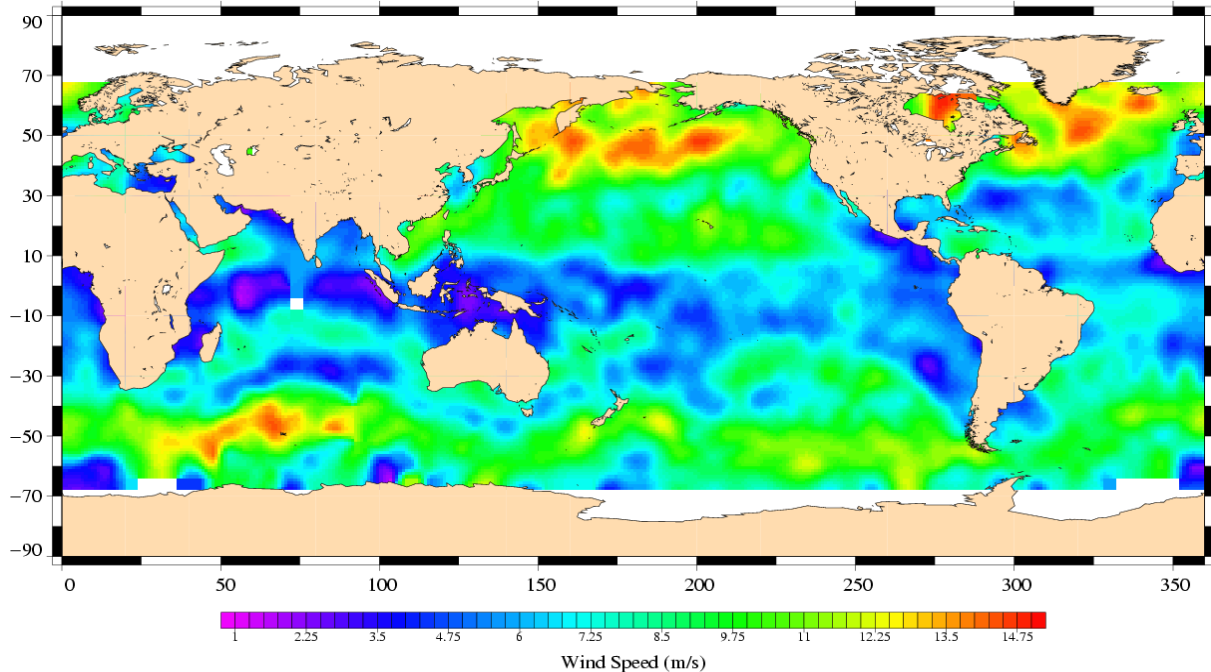
TOPEX/Poseidon, cycle 450
Period : 01/12/2004 – 11/12/2004



3.10 Wind and wave maps

These two figures show wind and wave estimations derived from 10 days of altimeter measurements.

TOPEX/Poseidon, cycle 450
Period : 01/12/2004 – 11/12/2004



TOPEX/Poseidon, cycle 450
Period : 01/12/2004 – 11/12/2004

